



Vehicle System Connection Tools

Improve Quality, Efficiency,
& Precision of Leak Testing

fastestinc.com



FASTEST[®]

Global Leader in Industrial Sealing Connection Technology

Vehicle Systems | HVAC-R | Compressed Gas | Medical Life Science | Aerospace

At FasTest, our mission is to reduce our customer's manufacturing costs, improve testing safety, and enhance leak testing processes.

As an industry leader of Sealing and Connection Technologies, FasTest offers standard products for most ports/threads/tubes, and a dedicated team of Custom Design Experts to engineer optimized solutions for demanding applications. Connect fast, seal reliably, test safely.



BROAD OFFERING

Extensive standard and Custom Engineered Solutions.



INTELLIGENT TOOLS

Sensing & data generation tools that support process automation.



APPLICATION EXPERTS

Optimized solutions, tailored to your unique needs.



GLOBAL SUPPORT

Global distribution network provides local, responsive support.



SUPERIOR QUALITY

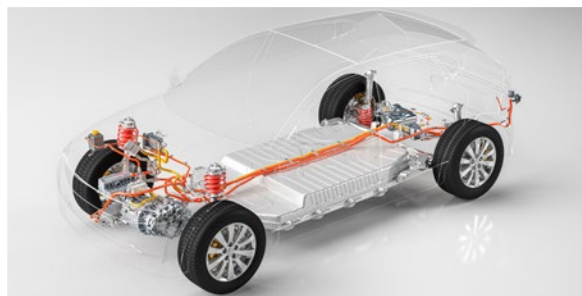
ISO 9001 Certified; Robust tools improve the quality of your product.

On-Highway & Off-Highway Component Expertise

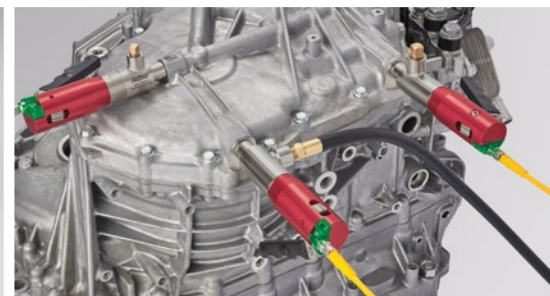
Internal Combustion Engines



Electric Vehicle Battery Packs



Vehicle System Components





Leak Test Connection Tools for Every Port & Thread



Accurate Connection & Seal

Precision engineered tools provide the highest quality connection and seal for accurate testing.



Reduce Repetitive Motion Injuries

Easy-to-use one hand operation, eliminate the painful twisting motions of standard fittings.



Safely Connect in Seconds

FasTest's ergonomic tools instantly attach to ports and threads - no wrenches, thread tape, or sealants for a leak-tight seal.



Safety First

Multiple safety features are included in every tool, including pressure assisted sealing technology.



Durable Connection Tools

Engineered for precision and durability to withstand rigorous testing environments.



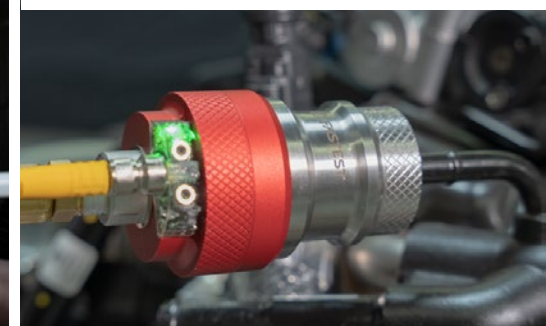
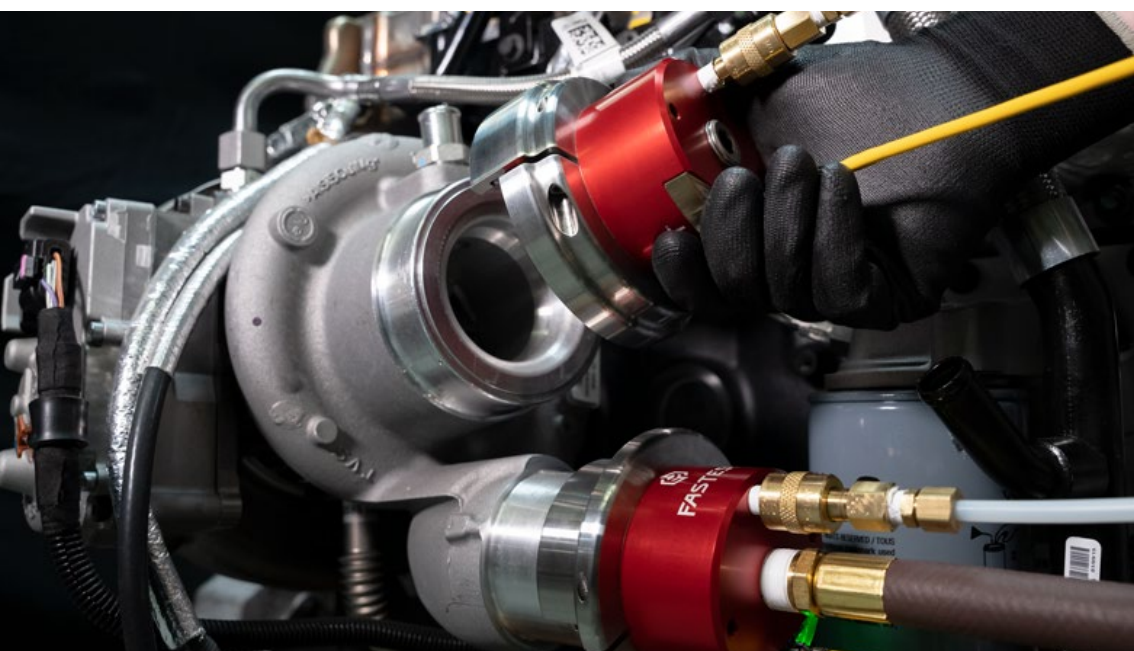
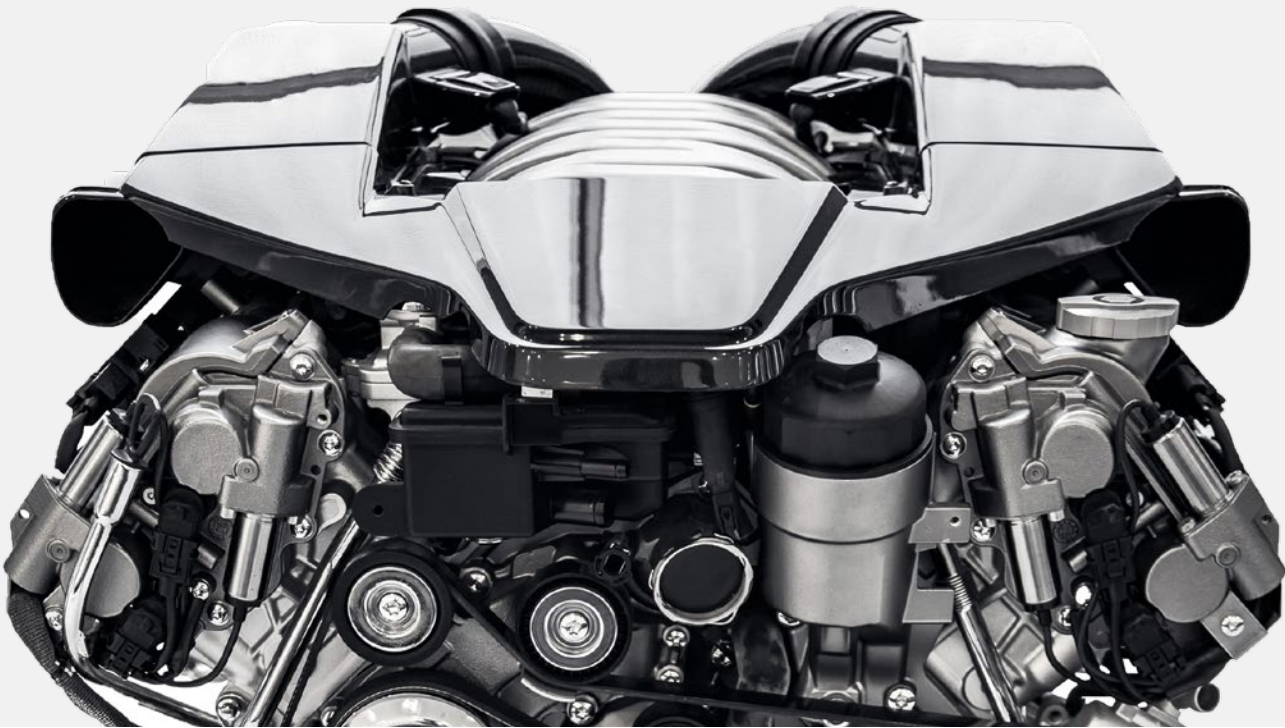
Quality Tools, Quality Tests

Engineered for the highest quality connection and seal. Reduce False Failures caused at the connection points.

Internal Combustion Engine Leak Testing

» Connection Tools Designed for YOUR Engine

Maximize efficiency when leak testing any size engine with FasTest Connection Tools. Safely and quickly connect to to transfer fluid, leak test, or plug any port.



» Reduce Time to Run Leak Tests

Minimize the set up time it takes to prepare the engine for a leak test. Compared to using in-house solutions like clamps and pad seals, Fastest Connection Tools can drastically improve throughput. Reducing set up by a couple minutes can increase the total throughput of engines per shift.

» Reduce False Failures

False failures are a costly result typically caused by poor connections and seals. By using accurate sealing Connection Tools, leak tests are more reliable and consistent - if a leak test fails, the leak is not from the point of connection.

» Improve Quality of Test

Improve Quality of Test by replicating the real-world connections on the engines. This gives operators a better representation of the engines performance once installed in the vehicle. Many in-house solutions can mask leaks instead of identifying them.

Internal Combustion Engine Connection Tools



60

Standard & Custom
Sized Threads
(750 psi/51 bar)



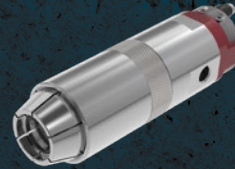
VDA

VDA Standard Ports
(150 psi/10.3 bar)



70 FR

J2044 Standard
Fuel Rails
(750 psi/51 bar)



FX

High Pressure
Connections to
Standard Threads
(5,000 psi/345 bar)



ZGNP

Wide Tolerance Threaded
Connections for Multiple
Thread Sizes/Types
(300 psi/20.7 bar)



FN

High Pressure
Connections to
Threaded Bores
(5,000 psi/345 bar)



FE

Standard Tubes and
Threads
(500 psi/34 bar)



FEG

Custom Cradle
Connections to
Flanged Ports and
Turbos



FI

Standard Tubes,
Bores and Threads
(120 psi/8.3 bar)



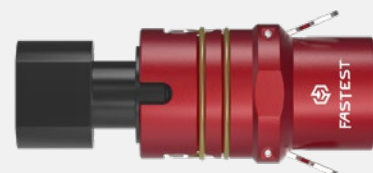
FIG

Gripping Connections
to Cast and Rough
Surfaces
(120 psi/8.3 bar)

Battery Pack Leak Testing

- » Improve Speed & Accuracy of Battery Pack Testing
- » Tailored Connection Tools for a Full Battery Pack Leak Test

FasTest's Dedicated Team of Engineers work with you to develop the ideal connectors to meet your needs/requirements. We want to evolve with our customers to develop world class Connection Tools and technology.



» Identify & Eliminate Leaks Allowing Condensation/Water into the Cell, and Leaks Allowing Electrolytes Out of the Cell

Ensure all connections ports on battery are sealed and leak-tight to avoid the risk of contamination to battery cell. Fastest offers leak test Connection Tools for all electrical connection fittings.

» Designs for Automation

Automation friendly and customizable to any electrical header connection. Tailored Connections Tools to fit your battery.

» Improve Quality & Reduce Warranty Claims

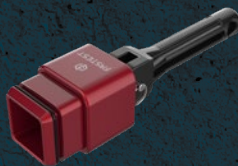
Warranty claims are inherently expensive, especially when they involve an engine or battery. Precision engineered tools provide the highest quality connection and seal for accurate testing.

Battery Pack Connection Tools



BEVP

Automated Connections to BEV Standard Ports



BEVM

Manual Connections to BEV Standard Ports



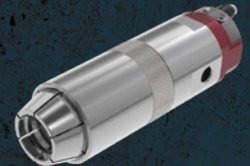
VDA

VDA Standard Ports (150 psi/10.3 bar)



70

External Custom Tube Feature Connections (750 psi/51 bar)



FXP

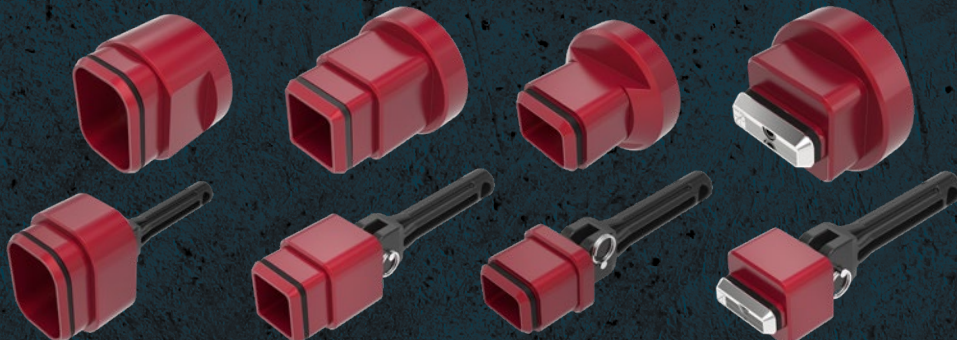
High Pressure Connections to Standard Threads (5,000 psi/345 bar)



DON'T SEE A SOLUTION FOR YOUR APPLICATION? Submit a custom application form and drawing to fastsales@fastestinc.com or to your local distributor.

Custom BEV

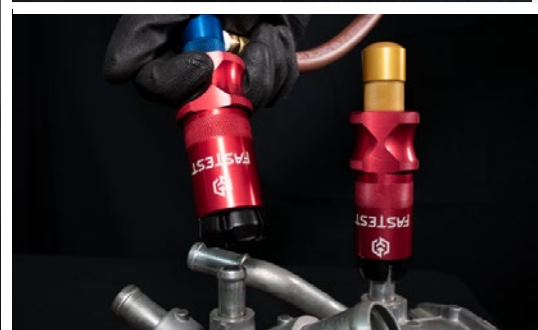
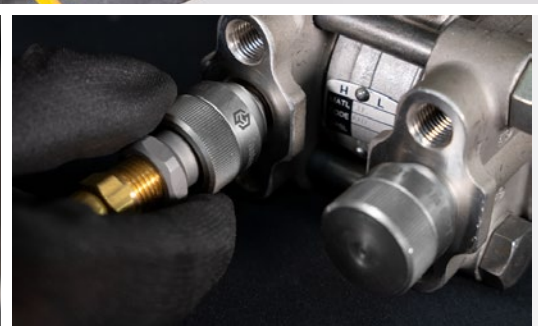
Examples of BEV we have tailored for our customers. »



Vehicle System Component Leak Testing

» Improve Testing Safety and Efficiency

FasTest offers Connection Tools for cooling systems, steering systems, intake/exhaust components, fuel systems, transmissions, brake systems, washer systems, climate control components, and more.



» Eliminate Repetitive Motion & Improve Operator Safety

Easy-to-use Connection Tool operation - no wrenches, thread tape, or sealants for a leak-tight seal. Safety features designed into every tool including Pressure Assisted Sealing and Internal Shut-Off valves.

» Quality Improvement & Reduce Warranty Claims

Precision engineered tools provide the highest quality connection and seal for accurate testing.

» Increase Throughput

FasTest Connection Tools allow operations to quickly connect to any port and thread. Connect instantly for a leak-tight seal and minimize preparation time before a leak test.

Vehicle System Component Connection Tools



60

Standard & Custom
Sized Threads
(750 psi/51 bar)



70 FR

J2044 Standard
Fuel Rails
(750 psi/51 bar)



FN

High Pressure
Connections to
Threaded Bores
(5,000 psi/345 bar)



FX

High Pressure
Connections to
Standard Threads
(5,000 psi/345 bar)



ZGNP

Wide Tolerance Threaded
Connections for Multiple
Thread Sizes/Types
(300 psi/20.7 bar)



FE

Standard Tubes and
Threads
(500 psi/34 bar)



FEG

Custom Cradle
Connections to
Flanged Ports and
Turbos



FI

Standard Tubes,
Bores and Threads
(120 psi/8.3 bar)



FIG

Gripping Connections
to Cast and Rough
Surfaces
(120 psi/8.3 bar)



MET/MIT

Standard Treads
(10,000 psi/689 bar)

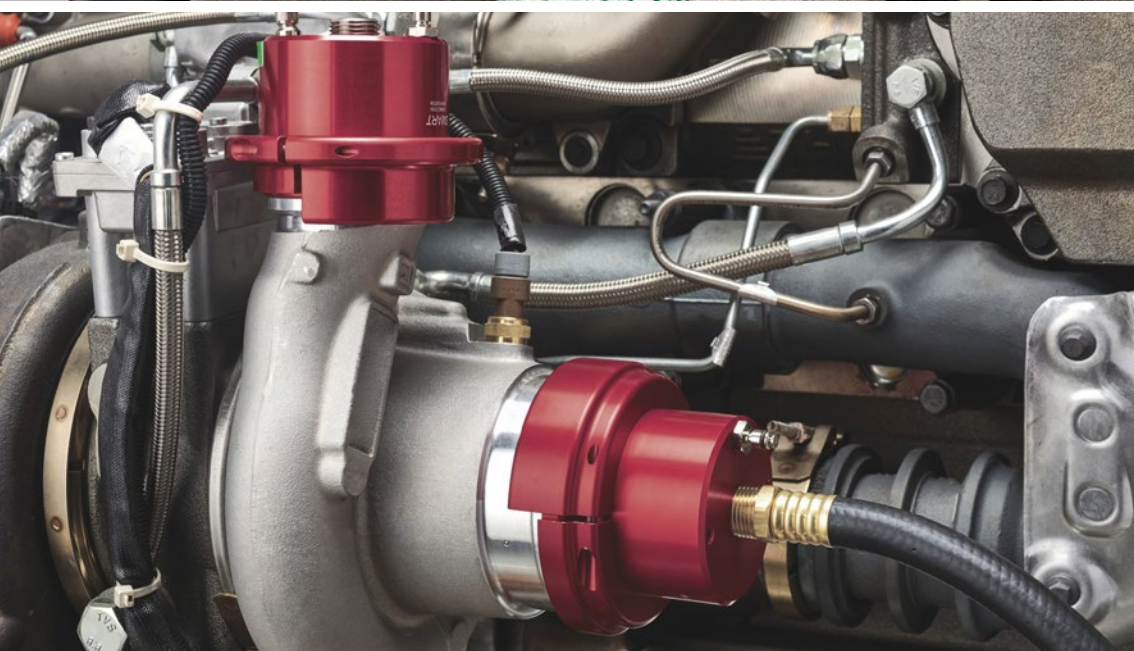


DON'T SEE A SOLUTION FOR YOUR APPLICATION? Submit a custom application form and drawing to fastsales@fastestinc.com or to your local distributor.

Custom Engineered Solutions

» We Transform Connection Tools into Tailor-Made Solutions to Fit Your Exact Requirements

Our Team of Custom Engineered Solutions will work with you to identify and design the optimal Connection Tool for your testing needs. Having difficulty sealing a unique port? Issues with clearance? Let us help.





Initial Assessment

Contact fastsales@fastestinc.com to submit a custom application form.



Mapping the Application

Our Team of Custom Engineered Solutions will work with you to provide optimal designs.



Complete Connection Tool Package

We work with your Team to provide complete package of Connection Tools tailored to your testing requirements.



Setup Support

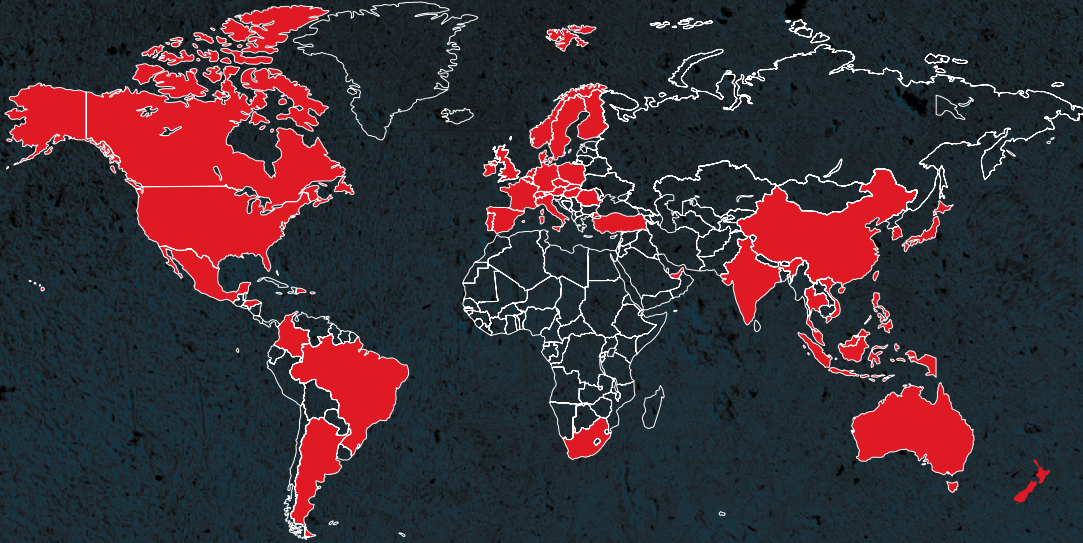
We work with you to ensure a seamless integration.



Continual Support

After setup, we maintain support to make sure all Connection Tools are working at peak performance.

FASTEST GLOBAL DISTRIBUTION NETWORK



Interested in Learning More? Have Questions?

Contact Us.

fastsales@fastestinc.com

651.251.9741



Designed in the U.S.A.

Headquarters | USA

1646 Terrace Drive, Roseville, MN, 55113-1317

Phone: 651.645.6266 • Fax: +1.651.645.7390 • www.fastestinc.com

Shenzhen | China

Room#1013,1015, A9 Building, Tianrui Industrial Park

No.35 Fuyuan 1st Road, FuHai residential district,

Baoan Shenzhen, China 518103

(755) 27084905 • fastsalescn@fastestusa.cn