

OPERATING INSTRUCTIONS



Connector Maintenance:

- A daily, weekly and periodic inspection of the connector by competent person is recommended. User must establish a regular interval for maintenance as determined by the user media and operational environment.
- Inspection should include visual checks of the ball sealing area, sleeve, missing or loose components, leak tightness, ease of operation, sufficient lubrication, wear, dirt accumulation and damage.
- Establish a regular interval for lubrication. The media and environment will be determining factors in establishing this interval to prevent dryness and/or corrosion.
- Difficulty of operation after continual use indicates a need for lubrication or other maintenance.
- Use only original **FasTest** spare parts that are designed for the application and are subject to strict quality control. See Warranty.

Safety Warnings – Guidelines:

- If instructions are not completely understood by operator or components are missing, contact **FasTest** before attempting use of the connector.
- **FasTest CMFT70 Connector is NOT internally valved.** Do not attempt to disconnect unless safe conditions are met.
- **FasTest CMFT70** Connectors must only be used with test pieces of a specific size as indicated by the part number. Improper use could cause separation of the connector from the test piece resulting in physical harm or damage.

FasTest, Inc. Product Warranty

FasTest, Inc. warrants its products against defects of workmanship and/or material for 12 months from the date of the sale by FasTest, Inc. This warranty is void if the product is misused, tampered with or used in a manner that is not in accordance with FasTest, Inc. recommendations and/or instructions. FasTest, Inc. is not liable for consequential or other damages including, but not limited to, loss, damage, personal injury, or any other expense directly or indirectly arising from the use of or inability to use its products either separately or in combination with other products. ALL OTHER WARRANTIES EXPRESSED OR IMPLIED, WHETHER ORAL OR WRITTEN, INCLUDING BUT NOT LIMITED TO WARRANTIES OR MERCHANTABILITY OR FITNESS FOR A PARTICULAR PURPOSE ARE EXPRESSLY EXCLUDED.

Remedy under this warranty is limited to replacement of the product or an account credit in the amount of the original selling price, at the option on FasTest, Inc. All allegedly defective products must be returned prepaid transportation to FasTest, Inc. along with information describing the products performance, unless disposition in the field is authorized in writing by FasTest, Inc.

CMFT70 Charge Tool

Description: The Charge Tool is a sleeve actuated connector that allows processing directly through the seat before the PortMax Plug is installed.



CMFT70 Charge Tool

Please thoroughly read the instructions prior to operating the CMFT70 Charge Tool. The CMFT70 is designed to provide a safe, reliable leak-tight seal and connection when properly maintained and operated. If you do not understand instructions, or if components are missing, call **FasTest** before using connector.

- The connector is designed to mate with a specific application. Verify the application prior to the introduction of pressure or processing.
- Connectors are NOT designed for permanent connections and are for temporary connections only.

CoreMax®

CMFT70
CHARGE TOOL
PATENT PENDING

Roseville, MN
Fax: 651-645-7390
www.fastestinc.com

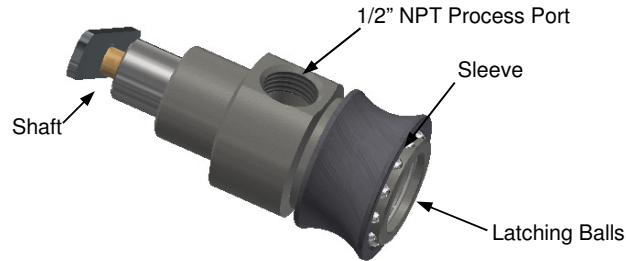
WP179 Rev A 12/15/21

OPERATING INSTRUCTIONS

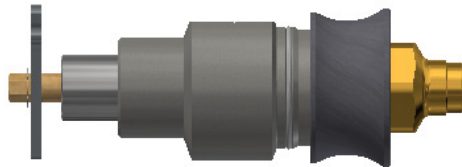


Warning: This connector is NOT internally-valved. All pressure must be dissipated before disconnection.

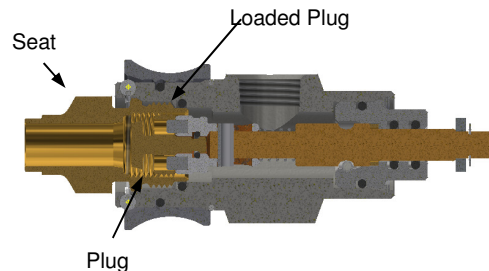
Operation of the CMFT70 Charge Tool:



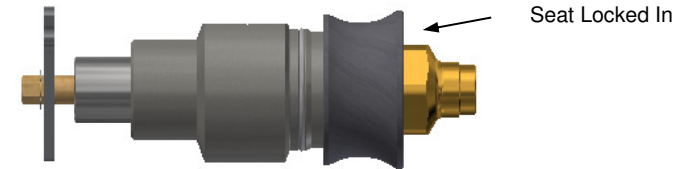
1. Attach the CMFT70 tool to the seat/plug assembly. Rotate the shaft until the drive pins engage the holes in plug.



2. Rotate the shaft counterclockwise until the plug threads begin to slip. The slipping motion is a result of the plug being full open or backed out. DO NOT remove the connector at this point. Charging can now take place.

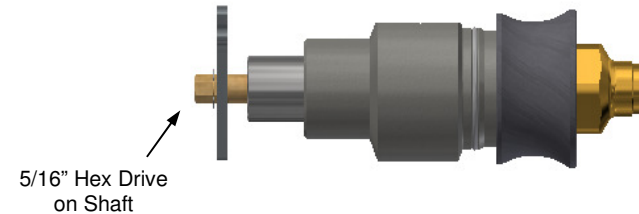


3. Once the unit is charged, the plug can now be resealed by turning the handle clockwise. The tool automatically holds forward pressure on the plug. This pressure along with the twisting motion of the handle will allow the threads of the plug to engage the threads of the seat.



4. Once the plug is fully threaded in by hand, it may now be torqued.

5. After processing is complete, the core may be torqued into the seat using the *FasTest* manual Torque wrench, SCMFTM02, with a 5/16" socket. Note: a wrench may be applied the hex of the seat during this operation. If you do not use a wrench on the seat, fracturing of the braze joint may occur.



6. Torque the plug and to 12-14 ft/lbs.

7. Once the plug and seat are properly threaded together, the remaining refrigerant should be reclaimed from the connector. Once this is done the charge tool may be removed from the PortMax.



CoreMax[®]

**CMFT70
CHARGE TOOL**
PATENT PENDING

Roseville, MN
Fax: 651-645-7390
www.fastestinc.com

WP179 Rev A 12/15/21

OPERATING INSTRUCTIONS



CoreMax[®]

CMFT70
CHARGE TOOL
PATENT PENDING

Roseville, MN
Fax: 651-645-7390
www.fastestinc.com

WP179 Rev A 12/15/21