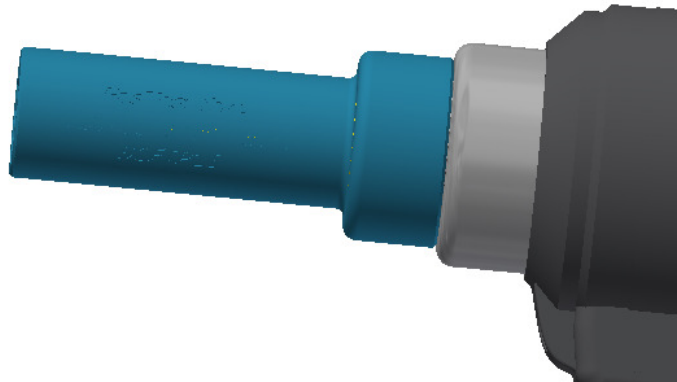


HEAD INSTALLATION AND OPERATING INSTRUCTION

FasTest[®]
Your Productivity Connection



SCFTP0620 CoreMax Installation Torque Tool.

Description: The *CoreMax* Installation Torque Tool Installs the CoreMax Valve Into a CoreMax Seat, Torqueing the Valve to 8 ft/lbs. at 200 RPM's (Maximum).

SCFTP020 CoreMax Installation Torquing Tool



FasTest, Inc. Product Warranty

FasTest, Inc. warrants its products against defects of workmanship and/or material for 12 months from the date of the sale by FasTest, Inc. This warranty is void if the product is misused, tampered with or used in a manner that is not in accordance with FasTest, Inc. recommendations and/or instructions. FasTest, Inc. is not liable for consequential or other damages including, but not limited to, loss, damage, personal injury, or any other expense directly or indirectly arising from the use of or inability to use its products either separately or in combination with other products. ALL OTHER WARRANTIES EXPRESSED OR IMPLIED, WHETHER ORAL OR WRITTEN, INCLUDING BUT NOT LIMITED TO WARRANTIES OR MERCHANTABILITY OR FITNESS FOR A PARTICULAR PURPOSE ARE EXPRESSLY EXCLUDED.

Remedy under this warranty is limited to replacement of the product or an account credit in the amount of the original selling price, at the option on FasTest, Inc. All allegedly defective products must be returned prepaid transportation to FasTest, Inc. along with information describing the products performance, unless disposition in the field is authorized in writing by FasTest, Inc.

Please thoroughly read the instructions prior to operating the SCFTP0620 CoreMax torque tool. If you do not understand instructions, or if components are missing, call *FasTest* before using connector.

- The Torque Tool is designed to mate with a specific application

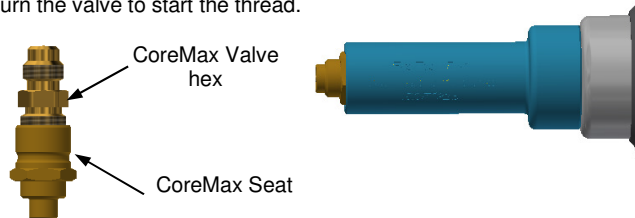
CoreMax[®]

Roseville, MN
Ph: 1-800-444-2373
Fax: 651-645-7390
www.fastestinc.com
WP171 Rev A 03/28/2019

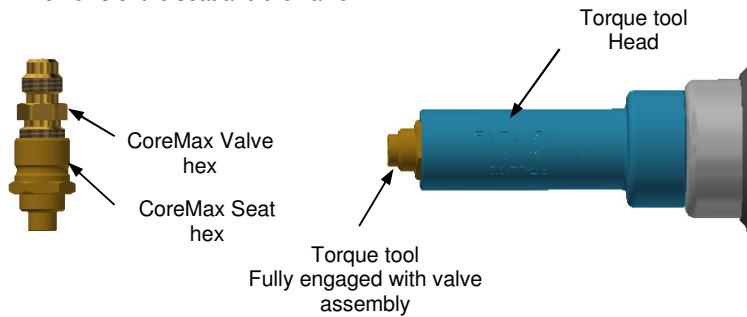
HEAD INSTALLATION AND OPERATING INSTRUCTION

OPERATION:

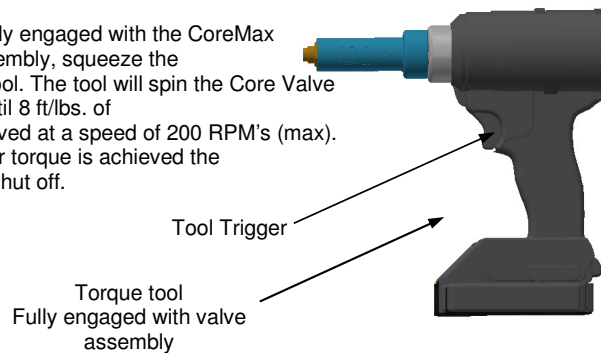
1. With the seat (SCH07030xxx) Brazed in place, Place the CoreMax Core (SCCA07H) Into seat. Turn the valve to start the thread.



2. With the CoreMax valve started into the seat place the torque tool onto The valve, being sure that the socket(s) of the torque tool are engaged with The hex's of the seat and the valve.

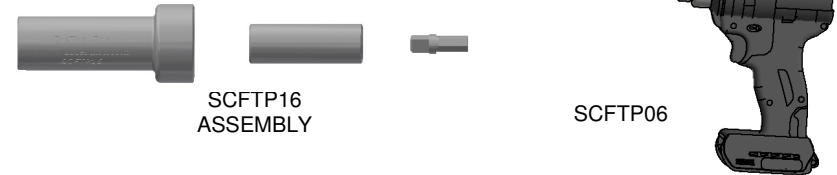


3. With the tool fully engaged with the CoreMax Valve/Seat assembly, squeeze the Trigger of the tool. The tool will spin the Core Valve into the seat until 8 ft/lbs. of Torque is achieved at a speed of 200 RPM's (max). Once the proper torque is achieved the torque tool will shut off.

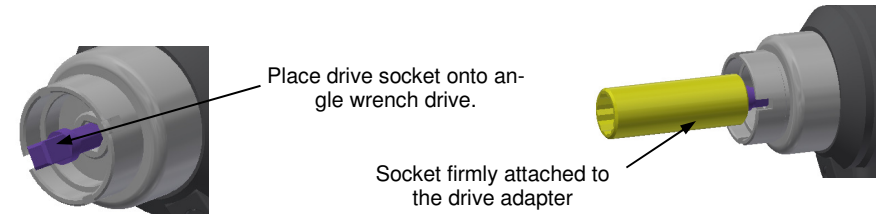


Installation of the tool head (SCFTP16), Onto the SCFTP06 angle wrench.

1. Obtain the torque head assembly (SCFTP16) and the angle torque wrench (QXN2PT18PS6-VP1-K40).



2. Securely place the 1/4" drive adapter (SCFTP61) Into the SCFTP06 tool. Attach the 1/2" dp socket (5543A87) to the square end of the adapter.



3. Place the hold socket (SCFTP6212) and socket head on to the torque wrench/head assembly. Thread on. NOTE: The threads are left hand.

