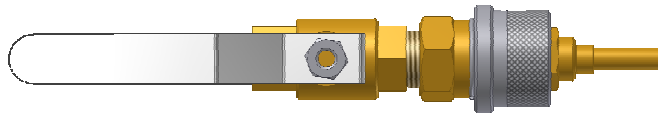
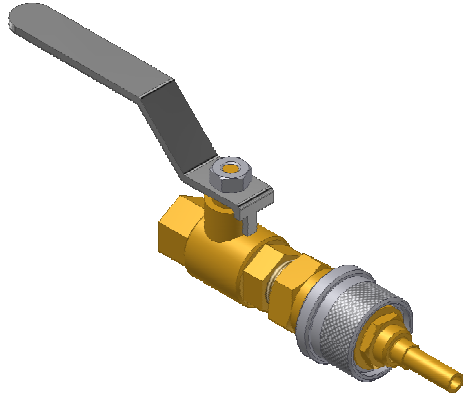


# OPERATING INSTRUCTIONS

3. Rotate lever on ball valve to the open/inline position for processing.



OPEN LEVER  
POSITION



4. Once processing has been completed, rotate lever back to the closed position and pull back the sleeve and remove connector from the seat.

## FasTest, Inc. Product Warranty

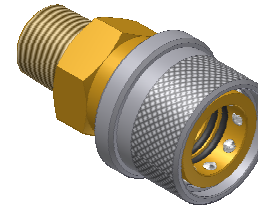
FasTest, Inc. warrants its products against defects of workmanship and/or material for 12 months from the date of the sale by FasTest, Inc. This warranty is void if the product is misused, tampered with or used in a manner that is not in accordance with FasTest, Inc. recommendations and/or instructions. FasTest, Inc. is not liable for consequential or other damages including, but not limited to, loss, damage, personal injury, or any other expense directly or indirectly arising from the use of or inability to use its products either separately or in combination with other products. ALL OTHER WARRANTIES EXPRESSED OR IMPLIED, WHETHER ORAL OR WRITTEN, INCLUDING BUT NOT LIMITED TO WARRANTIES OR MERCHANTABILITY OR FITNESS FOR A PARTICULAR PURPOSE ARE EXPRESSLY EXCLUDED.

Remedy under this warranty is limited to replacement of the product or an account credit in the amount of the original selling price, at the option of FasTest, Inc. All allegedly defective products must be returned prepaid transportation to FasTest, Inc. along with information describing the products performance, unless disposition in the field is authorized in writing by FasTest, Inc.

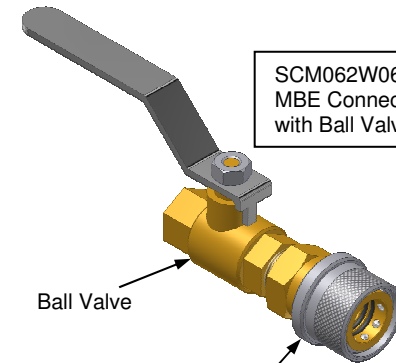
## CoreMax<sup>®</sup> MBE Connectors

### Description:

**SCM062W with Activation Pin and  
SCM062W061Y with Ball Valve**



SCM062W  
MBE Connector  
Non-Valved



SCM062W061Y  
MBE Connector  
with Ball Valve

Ball Valve

MBE Connector

**CoreMax** MBE Connectors are sleeve-actuated and grip onto the seat component. The SCM062W is non-valved and can be used with or without the *CoreMax* Core installed. The SCM062W061Y has a ball valve installed and it can be used with or without the *CoreMax* Core installed.

Please thoroughly read the instructions prior to operating the MBE Connector. The MBE is designed to provide a safe, reliable leak-tight seal and connection when properly maintained and operated. If you do not understand instructions, or if components are missing, call *FasTest* before using connector.

- The connector is designed to mate with a specific application. Verify the application prior to the introduction of pressure or processing.
- Connectors are NOT designed for permanent connections and are for temporary connections only.

**Warning: This connector is NOT internally-valved. All pressure must be dissipated before disconnection.**

# OPERATING INSTRUCTIONS

## Operation of the MBE Connector:

1. Pull the sleeve back and hold, then slide the connector over the *CoreMax Seat* until the connector stops.

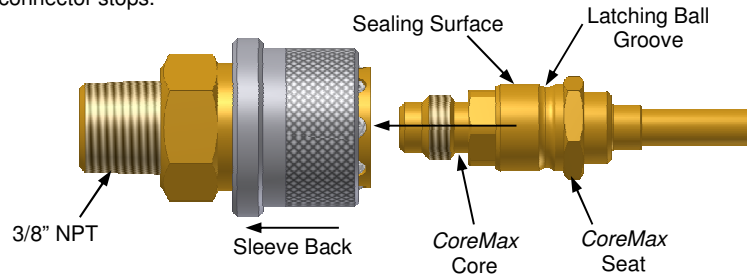


Fig. 1 Above, Shows MBE Attaching to CoreMax Core & Seat

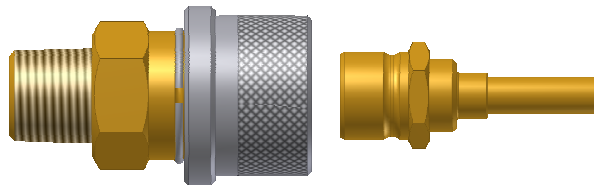
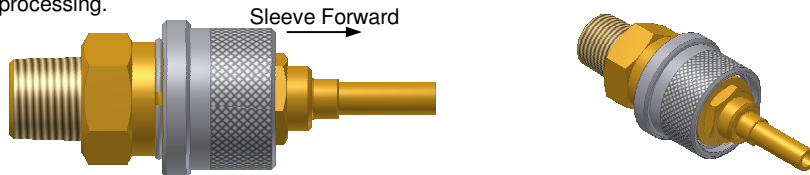


Fig. 2 Above, Shows MBE Attaching to Seat

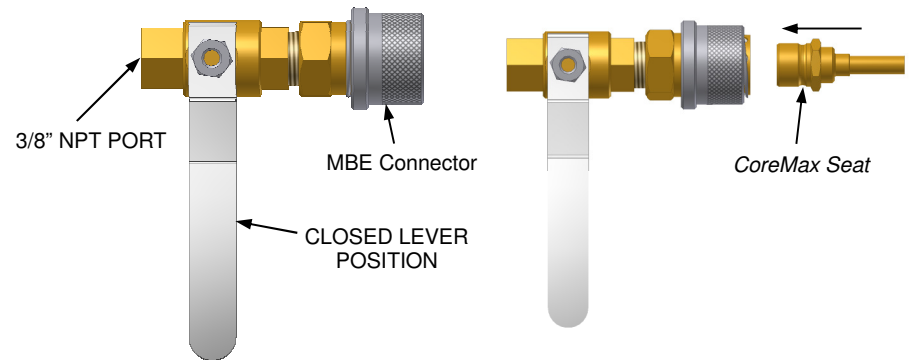
2. Then release the sleeve and it will snap forward pushing the latching balls into the ball groove on the *CoreMax Seat*. Make sure the balls are locked into the groove before processing.



3. With the MBE Connector latched to the seat you may now process through the port of the connector.
4. Once processing has been completed, pull back the sleeve and remove the connector.

## Operation of the MBE with Ball Valve:

1. With lever in the closed position connect the MBE to the Seat. Following steps 1 & 2 on other side of this sheet.



2. MBE Connector is latched to the seat with lever still in the closed position.

