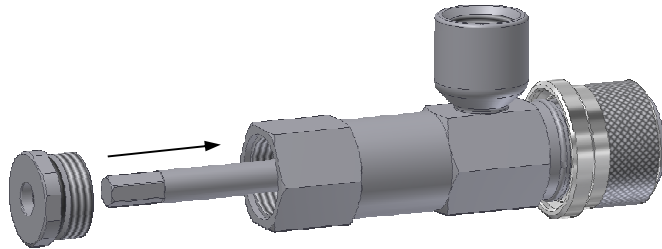
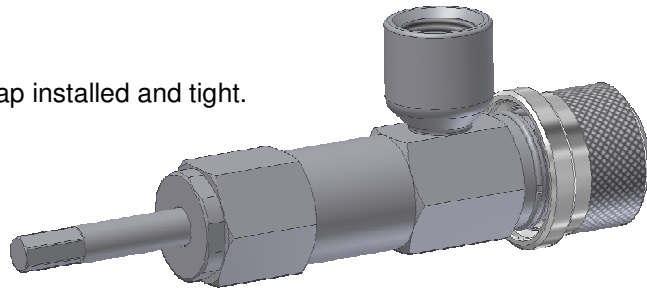


# REBUILD INSTRUCTIONS

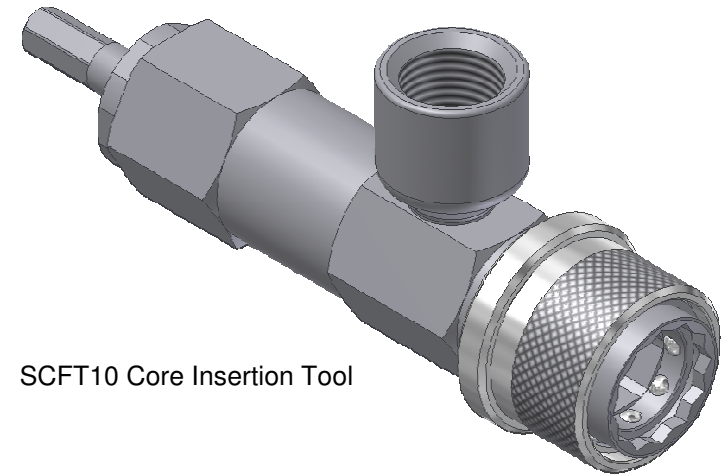
7. Slide the cap over the shaft and tighten into the body.



Cap installed and tight.



## SCFTR10 Rebuild Kit for SCFT10 *CoreMax* Insertion Tool



SCFT10 Core Insertion Tool

### **FasTest, Inc. Product Warranty**

FasTest, Inc. warrants its products against defects of workmanship and/or material for 12 months from the date of the sale by FasTest, Inc. This warranty is void if the product is misused, tampered with or used in a manner that is not in accordance with FasTest, Inc. recommendations and/or instructions. FasTest, Inc. is not liable for consequential or other damages including, but not limited to, loss, damage, personal injury, or any other expense directly or indirectly arising from the use of or inability to use its products either separately or in combination with other products. ALL OTHER WARRANTIES EXPRESSED OR IMPLIED, WHETHER ORAL OR WRITTEN, INCLUDING BUT NOT LIMITED TO WARRANTIES OR MERCHANTABILITY OR FITNESS FOR A PARTICULAR PURPOSE ARE EXPRESSLY EXCLUDED.

Remedy under this warranty is limited to replacement of the product or an account credit in the amount of the original selling price, at the option of FasTest, Inc. All allegedly defective products must be returned prepaid transportation to FasTest, Inc. along with information describing the products performance, unless disposition in the field is authorized in writing by FasTest, Inc.

Please thoroughly read the operating instructions prior to operating the SCFT10 Core Insertion Tool. The SCFT10 is designed to provide a safe, reliable leak-tight seal and connection when properly maintained and operated. If you do not understand instructions, or if components are missing, call *FasTest* before using connector.

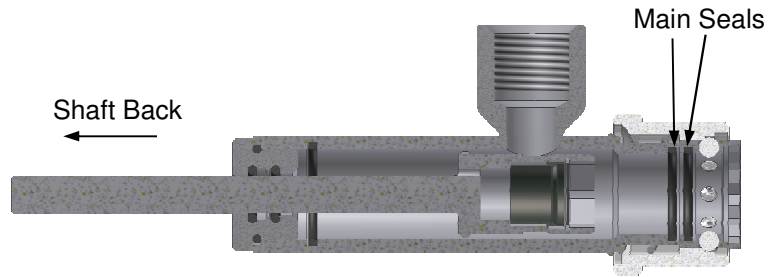
- The connector is designed to mate with a specific application. Verify the application prior to the introduction of pressure or processing.
- Connectors are NOT designed for permanent connections and are for temporary connections only.

**Warning: This connector is NOT internally-valved. All pressure must be dissipated before disconnection.**

# REBUILD INSTRUCTIONS

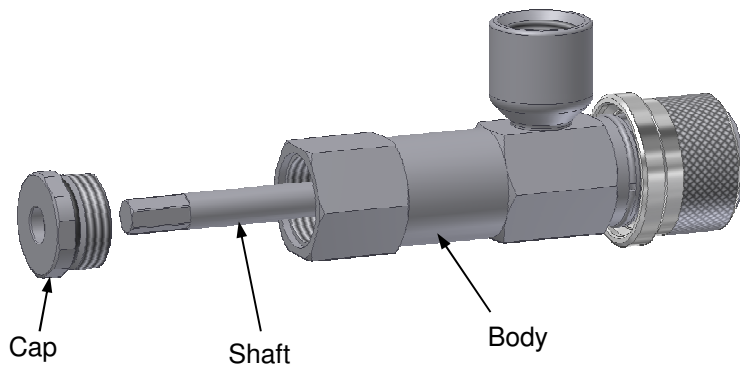
## Rebuild Instructions of the SCFT10 Core Insertion Tool:

1. Pull the shaft back to expose the o-ring main seals. With a small screw driver, or pick, remove the main seals from the tool. Exercise caution to not scratch the o-ring grooves.

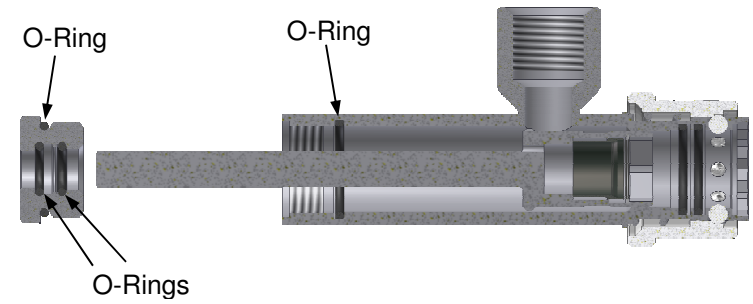


Cross-Section of Tool

2. Lightly lubricate with a petroleum based jelly. Place a new seal into each groove. Exercise caution not to harm or damage the new o-rings.
3. Remove the cap from the body and shaft.



4. With small screwdriver, or pick, remove the o-rings from inside and outside the cap. Also remove the o-ring from inside the body. Exercise caution to not scratch the o-ring grooves.



5. Lightly lubricate all new o-rings with a petroleum based jelly. Place the new replacement seals into their respective grooves with a small screw driver or blunt pick. Exercise caution not to harm or damage the new o-rings.
6. Lubricate the o-rings inside of the cap by spreading the o-rings apart and packing petroleum based jelly in the exposed groove.

Cross-Section of Cap

