

OPERATING INSTRUCTIONS



Connector Maintenance:

- A daily, weekly and periodic inspection of the connector by competent person is recommended. User must establish a regular interval for maintenance as determined by the user media and operational environment.
- Inspection should include visual checks of the ball sealing area, sleeve, missing or loose components, leak tightness, ease of operation, sufficient lubrication, wear, dirt accumulation and damage.
- Establish a regular interval for lubrication. The media and environment will be determining factors in establishing this interval to prevent dryness and/or corrosion.
- Difficulty of operation after continual use indicates a need for lubrication or other maintenance.
- Use only original **FasTest** spare parts that are designed for the application and are subject to strict quality control. See Warranty.

Safety Warnings – Guidelines:

- If instructions are not completely understood by operator or components are missing, contact **FasTest** before attempting use of the connector.
- **FasTest CMPT20 MBV Connector is internally valved** and will prevent loss of media when disconnected. Do not attempt to disconnect unless safe conditions are met.
- **FasTest CMPT20 MBV** Connectors must only be used with test pieces of a specific size as indicated by the part number. Improper use could cause separation of the connector from the test piece resulting in physical harm or damage.

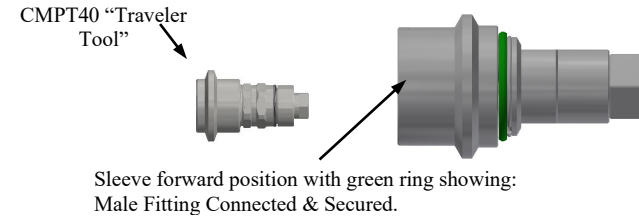
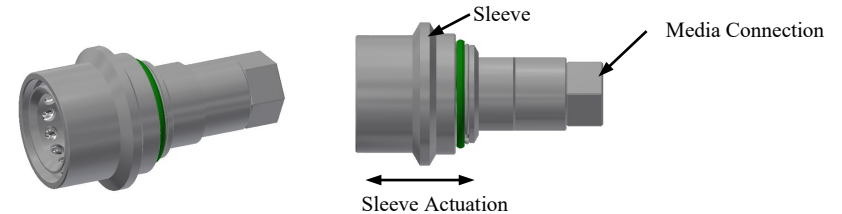
FasTest, Inc. Product Warranty

FasTest, Inc. warrants its products against defects of workmanship and/or material for 12 months from the date of the sale by FasTest, Inc. This warranty is void if the product is misused, tampered with or used in a manner that is not in accordance with FasTest, Inc. recommendations and/or instructions. FasTest, Inc. is not liable for consequential or other damages including, but not limited to, loss, damage, personal injury, or any other expense directly or indirectly arising from the use of or inability to use its products either separately or in combination with other products. ALL OTHER WARRANTIES EXPRESSED OR IMPLIED, WHETHER ORAL OR WRITTEN, INCLUDING BUT NOT LIMITED TO WARRANTIES OR MERCHANTABILITY OR FITNESS FOR A PARTICULAR PURPOSE ARE EXPRESSLY EXCLUDED.

Remedy under this warranty is limited to replacement of the product or an account credit in the amount of the original selling price, at the option on FasTest, Inc. All allegedly defective products must be returned prepaid transportation to FasTest, Inc. along with information describing the products performance, unless disposition in the field is authorized in writing by FasTest, Inc.

CMPT20 Sleeve Activated Connector

Description: CMPT20 for CMPT40 Connection.



CMPT20 MBV Connector provides a reliable leak-tight connection that grips and seals a Male Fitting. Simply insert male end of fitting and slide sleeve forward, gripping balls will secure fitting.

Please thoroughly read and understand these operating instructions prior to operating the connector. The use of pressurized media for filling and sealing requires a thorough understanding of the **FasTest CMPT20 MBV** Operating Instructions.

- Operation
- Connector Maintenance
- Safety Warnings - Guidelines

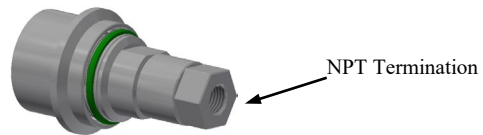
CMPT20 MBV
SERIES
PATENT PENDING

Roseville, MN
Ph: 1-800-444-2373
Fax: 651-645-7390
www.fastestinc.com
WP175 Rev B 10/03/2024

OPERATING INSTRUCTIONS

Installation:

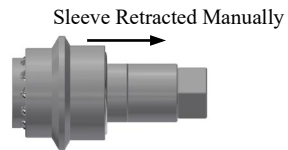
Connect hose securely to the NPT Termination of the CMPT20 **MBV** Connector.



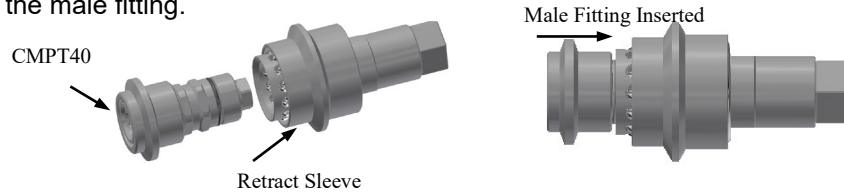
Operation:

Connecting Action:

1. Retract sleeve as shown.

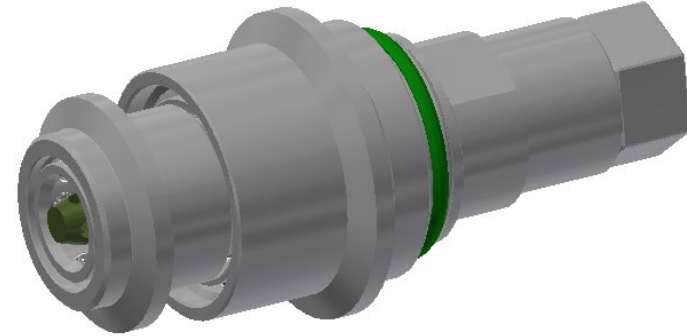
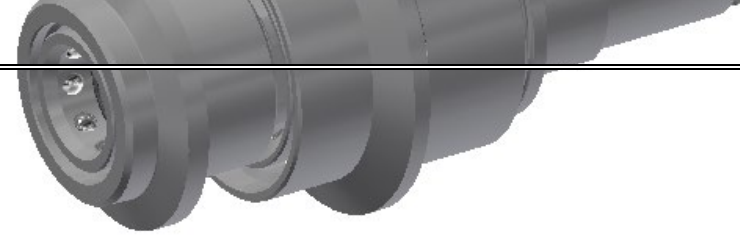
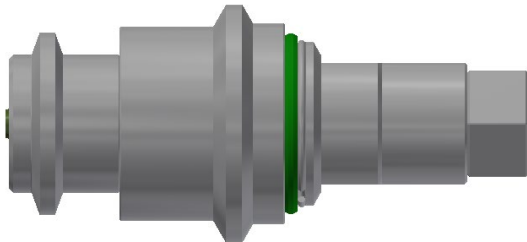


2. Insert test piece and slide sleeve forward collapsing balls around the male fitting.



Sleeve Forward Manually

3. Slide the sleeve forward on connector.



ZEROMAX™

CMPT20 MBV
SERIES
PATENT PENDING

Roseville, MN
Ph: 1-800-444-2373
Fax: 651-645-7390
www.fastestinc.com
WP175 Rev B 10/03/2024