

OPERATING INSTRUCTIONS



Connector Maintenance:

- A daily, weekly and periodic inspection of the connector by competent person is recommended. User must establish a regular interval for maintenance as determined by the user media and operational environment.
- Inspection should include visual checks of the ball sealing area, sleeve, missing or loose components, leak tightness, ease of operation, sufficient lubrication, wear, dirt accumulation and damage.
- Establish a regular interval for lubrication. The media and environment will be determining factors in establishing this interval to prevent dryness and/or corrosion.
- Difficulty of operation after continual use indicates a need for lubrication or other maintenance.
- Use only original **FasTest** spare parts that are designed for the application and are subject to strict quality control. See Warranty.

Safety Warnings – Guidelines:

- If instructions are not completely understood by operator or components are missing, contact **FasTest** before attempting use of the connector.
- **FasTest CMFT60 MBE Connector is NOT internally valved.** Do not attempt to disconnect unless safe conditions are met.
- **FasTest CMFT60 MBE** Connectors must only be used with test pieces of a specific size as indicated by the part number. Improper use could cause separation of the connector from the test piece resulting in physical harm or damage.

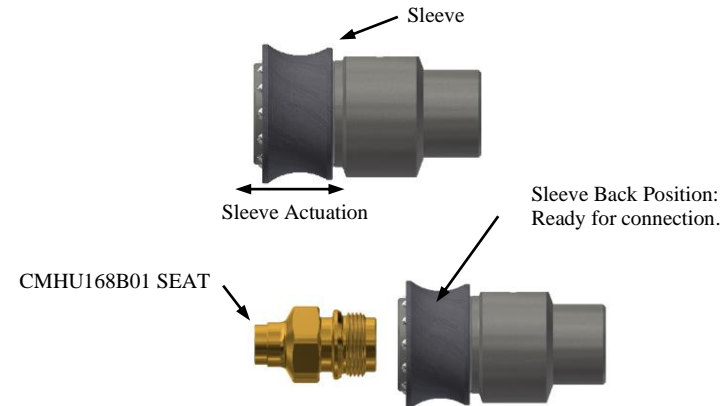
FasTest, Inc. Product Warranty

FasTest, Inc. warrants its products against defects of workmanship and/or material for 12 months from the date of the sale by FasTest, Inc. This warranty is void if the product is misused, tampered with or used in a manner that is not in accordance with FasTest, Inc. recommendations and/or instructions. FasTest, Inc. is not liable for consequential or other damages including, but not limited to, loss, damage, personal injury, or any other expense directly or indirectly arising from the use of or inability to use its products either separately or in combination with other products. ALL OTHER WARRANTIES EXPRESSED OR IMPLIED, WHETHER ORAL OR WRITTEN, INCLUDING BUT NOT LIMITED TO WARRANTIES OF MERCHANTABILITY OR FITNESS FOR A PARTICULAR PURPOSE ARE EXPRESSLY EXCLUDED.

Remedy under this warranty is limited to replacement of the product or an account credit in the amount of the original selling price, at the option of FasTest, Inc. All allegedly defective products must be returned prepaid transportation to FasTest, Inc. along with information describing the products performance, unless disposition in the field is authorized in writing by FasTest, Inc.

CMFT60 MBE Sleeve Activated Connector

Description: CMFT60 MBE “Refrigeration Quick Disconnect” for CMHU16XXX Seat Connection.



CMFT60 MBE Connector provides a reliable leak-tight connection that grips and seals a Male Fitting. Simply insert male end of fitting and slide sleeve forward, gripping balls will secure fitting.

Please thoroughly read and understand these operating instructions prior to operating the connector. The use of pressurized media for filling and sealing requires a thorough understanding of the **FasTest CMFT60 MBE** Operating Instructions.

- Operation
- Connector Maintenance
- Safety Warnings - Guidelines

COREMAX®

CMFT60 MBE
SERIES
PATENT PENDING

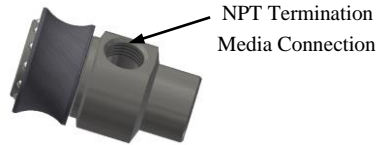
Roseville, MN
Ph: 1-800-444-2373
Fax: 651-645-7390
www.fastestinc.com
WP181 Rev A 12/14/2021

OPERATING INSTRUCTIONS



Installation:

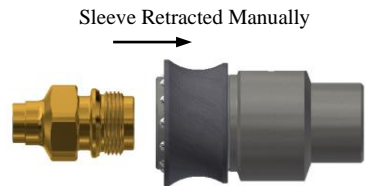
Connect hose securely to the NPT Termination of the CMFT60 **MBE** Connector.



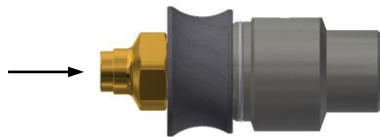
Operation:

Connecting Action:

1. Retract sleeve and position lever as shown.

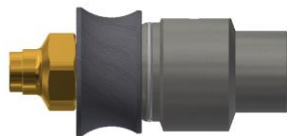


2. Insert test piece and slide sleeve forward collapsing balls around the male fitting.



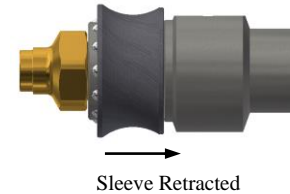
3. CMFT60 **MBE** is now sealed on the CMHU16XXX seat, Ready for pressurization.

Note: The Sleeve Will "Lock" Under Pressure to Prevent Accidental Disconnect.



Disconnecting Action:

1. Slide sleeve away from seat fitting.



2. Remove the MBE from the seat.

