

Re-Build Instructions



Connector Maintenance:

- Establish a regular interval for maintenance as determined by user media and operational environment.
- Inspection should include visual checks of the sealing area, sleeve or body wear, missing or loose components, leak tightness, ease of operation, sufficient lubrication, wear, dirt accumulation and damage.
- Establish a regular interval for lubrication. The media and environment will be determining factors in establishing this interval to prevent dryness and/or corrosion.
- Difficulty of operation after continual use indicates a need for lubrication or other maintenance.
- Use only original **FasTest** spare parts that are designed for the application and are subject to strict quality control. See warranty.

Safety Warnings – Guidelines:

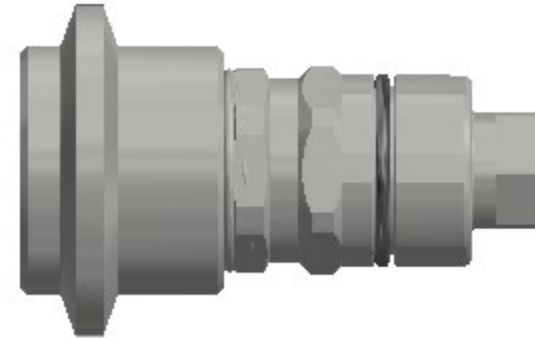
- If instructions are not completely understood by operator or components are missing, contact **FasTest** before attempting use of the connector.
- Application Safety: All **FasTest** products have been designed with safety in mind; however, it is the responsibility of the user to design each process in such a way to avoid mishaps that can cause physical hazard or property loss. Secondary restraints such as safety chains, shields, cages or fixtures are all good choices depending on the application. **FasTest** can recommend or assist you in clarifying potential hazards of your application.

FasTest, Inc. Product Warranty

FasTest, Inc. warrants its products against defects of workmanship and/or material for 12 months from the date of the sale by FasTest, Inc. This warranty is void if the product is misused, tampered with or used in a manner that is not in accordance with FasTest, Inc. recommendations and/or instructions. FasTest, Inc. is not liable for consequential or other damages including, but not limited to, loss, damage, personal injury, or any other expense directly or indirectly arising from the use of or inability to use its products either separately or in combination with other products. ALL OTHER WARRANTIES EXPRESSED OR IMPLIED, WHETHER ORAL OR WRITTEN, INCLUDING BUT NOT LIMITED TO WARRANTIES OR MERCHANTABILITY OR FITNESS FOR A PARTICULAR PURPOSE ARE EXPRESSLY EXCLUDED.

Remedy under this warranty is limited to replacement of the product or an account credit in the amount of the original selling price, at the option on FasTest, Inc. All allegedly defective products must be returned prepaid transportation to FasTest, Inc. along with information describing the products performance, unless disposition in the field is authorized in writing by FasTest, Inc.

Traveler Tool Repair Kit CMPTR40 Re-Build and Main Seal Instructions



Roseville, MN
Ph: 1-800-444-2373
Fax: 651-645-7390

www.fastestinc.com
WP187 Rev A 7/28/22

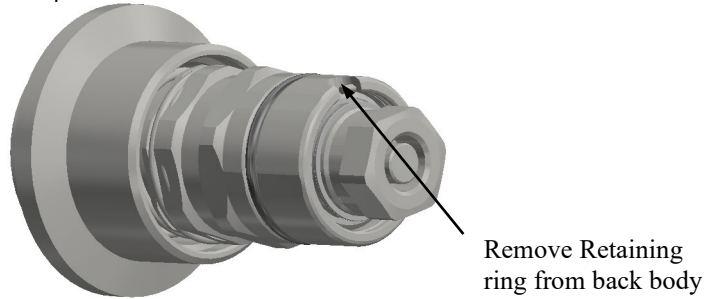
Re-Build Instructions



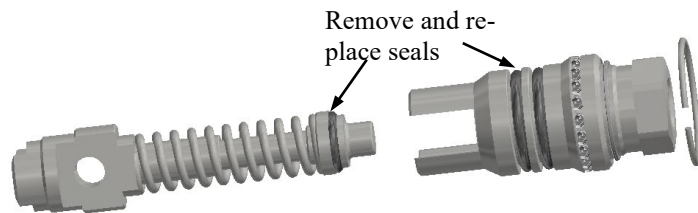
Repair Kit / Re-Build Instructions:

Dis-assembly

1. Remove the retaining ring from the back of the body with a pick or small screwdriver.



2. With the clip removed, the internals of the connector can be removed. Remove and replace all seals. Lubricate the seals with refrigerant oil.

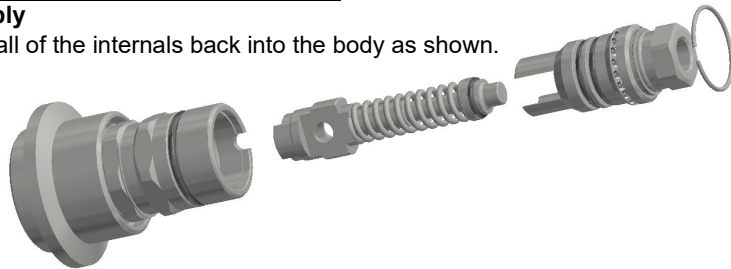


Once this step has been completed, the connector can be reassembled.

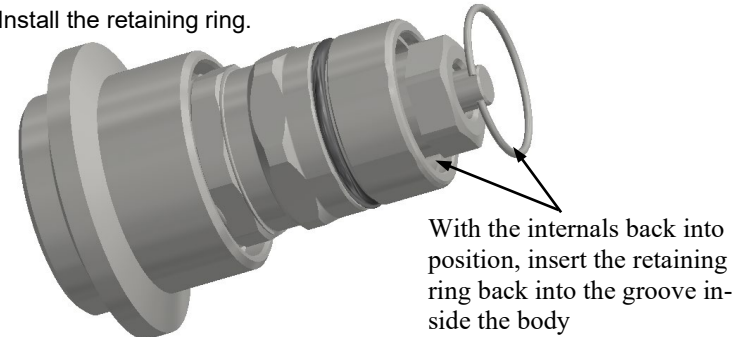
Repair Kit / Re-Build Instructions

Re-assembly

1. Slide all of the internals back into the body as shown.

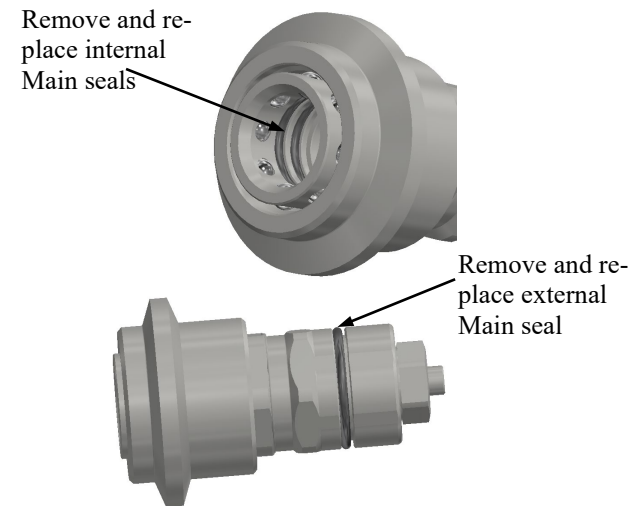


2. Install the retaining ring.



Main Seal Replacement Instructions:

1. Remove and replace the internal main seals with a pick or small screw driver. This connector has internal and external main seals.



Roseville, MN
Ph: 1-800-444-2373
Fax: 651-645-7390

www.fastestinc.com
WP187 Rev A 7/28/22