

# OPERATING INSTRUCTIONS



## **Connector Maintenance:**

- A daily, weekly and periodic inspection of the connector by competent person is recommended. User must establish a regular interval for maintenance as determined by the user media and operational environment.
- Inspection should include visual checks of the ball sealing area, sleeve, missing or loose components, leak tightness, ease of operation, sufficient lubrication, wear, dirt accumulation and damage.
- Establish a regular interval for lubrication. The media and environment will be determining factors in establishing this interval to prevent dryness and/or corrosion.
- Difficulty of operation after continual use indicates a need for lubrication or other maintenance.
- Use only original **FasTest** spare parts that are designed for the application and are subject to strict quality control. See Warranty.

## **Safety Warnings – Guidelines:**

- If instructions are not completely understood by operator or components are missing, contact **FasTest** before attempting use of the connector.
- **FasTest CMFT80 Connector is NOT internally valved.** Do not attempt to disconnect unless safe conditions are met.

**FasTest CMFT80** Connectors must only be used with test pieces of a specific size as indicated by the part number. Improper use could cause separation of the connector from the test piece resulting in physical harm or damage.

## **FasTest, Inc. Product Warranty**

FasTest, Inc. warrants its products against defects of workmanship and/or material for 12 months from the date of the sale by FasTest, Inc. This warranty is void if the product is misused, tampered with or used in a manner that is not in accordance with FasTest, Inc. recommendations and/or instructions. FasTest, Inc. is not liable for consequential or other damages including, but not limited to, loss, damage, personal injury, or any other expense directly or indirectly arising from the use of or inability to use its products either separately or in combination with other products. ALL OTHER WARRANTIES EXPRESSED OR IMPLIED, WHETHER ORAL OR WRITTEN, INCLUDING BUT NOT LIMITED TO WARRANTIES OR MERCHANTABILITY OR FITNESS FOR A PARTICULAR PURPOSE ARE EXPRESSLY EXCLUDED.

Remedy under this warranty is limited to replacement of the product or an account credit in the amount of the original selling price, at the option on FasTest, Inc. All allegedly defective products must be returned prepaid transportation to FasTest, Inc. along with information describing the products performance, unless disposition in the field is authorized in writing by FasTest, Inc.

## **CMFT80 Evacuation Tool**

**Description:** The Evacuation Tool is a sleeve actuated connector that allows processing directly through the seat before the *PortMax* Plug is installed.



CMFT80 Evacuation Tool

Please thoroughly read the instructions prior to operating the CMFT80 Evacuation Tool. The CMFT80 is designed to provide a safe, reliable leak-tight seal and connection when properly maintained and operated. If you do not understand instructions, or if components are missing, call **FasTest** before using connector.

- The connector is designed to mate with a specific application. Verify the application prior to the introduction of pressure or processing.
- Connectors are NOT designed for permanent connections and are for temporary connections only.

# CoreMax<sup>®</sup>

**CMFT80**  
**EVACUATION TOOL**  
PATENT PENDING

Roseville, MN  
Ph: 1-800-444-2373  
Fax: 651-645-7390

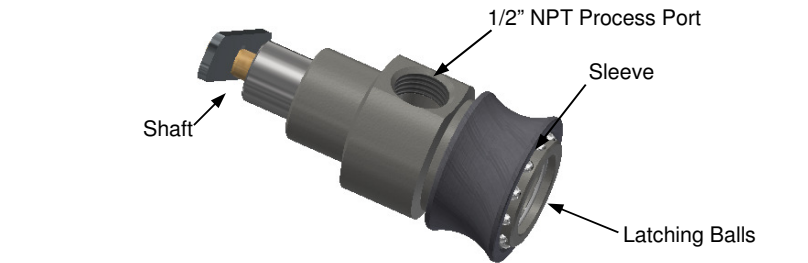
[www.fastestinc.com](http://www.fastestinc.com)  
WP180 Rev A 12/15/21

# OPERATING INSTRUCTIONS

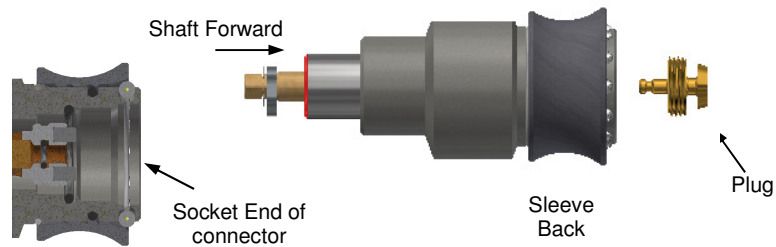


**Warning: This connector is NOT internally-valved. All pressure must be dissipated before disconnection.**

## Operation of the CMFT80 Evacuation Tool:



1. Push the shaft forward. Pull the sleeve back.



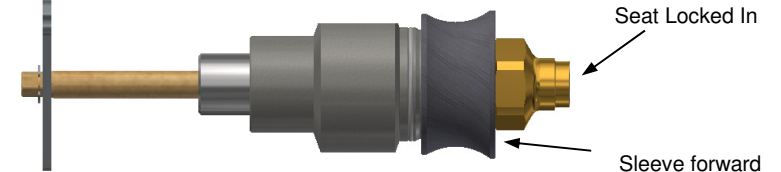
2. Insert the plug into the socket end of shaft, then release sleeve.  
*Note: The small end of the plug has to be inserted first.*



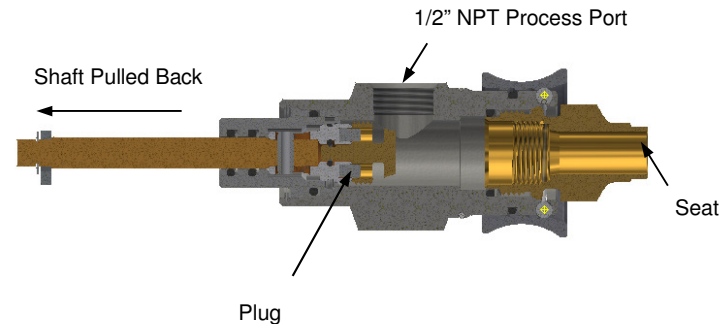
3. Once the core is fully locked and loaded into the shaft, pull the shaft back until it snaps into the back of the Core Insertion Tool.



4. With the sleeve pulled back, slide the Core Insertion Tool over the seat until the connector stops against the hex. Slide the sleeve forward. It will snap forward pushing the latching balls behind the shoulder on the PortMax seat. Make sure the balls are locked into place with the sleeve prior to pressurizing.



5. With the tool latched to the seat, pull the shaft back. You may now process through the port of the Evacuation Tool.



# CoreMax®

**CMFT80  
EVACUATION TOOL**  
PATENT PENDING

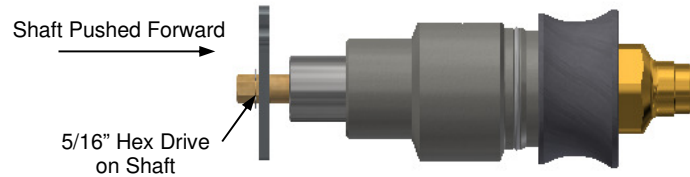
Roseville, MN  
Ph: 1-800-444-2373  
Fax: 651-645-7390

[www.fastestinc.com](http://www.fastestinc.com)  
WP180 Rev A 12/15/21

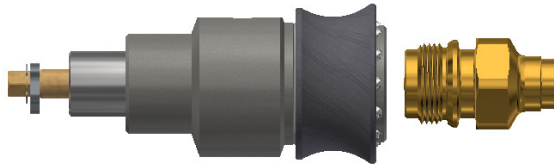
# OPERATING INSTRUCTIONS



6. After processing is complete, the plug may be torqued into the seat using a 5/16" socket, and *FasTest*, manual Torque wrench, SCMFTM02 (NOT PICTURED) or other applicable tool.
7. Push shaft forward until core stops against the seat.



8. Turning the 5/16" Hex Drive on the shaft will thread the core into seat. Torque the core and seat to 12-14 ft/lbs.
9. Once the plug and seat are properly threaded together, pull the sleeve back and remove the evacuation Tool.



**CoreMax**<sup>®</sup>

**CMFT80**  
**EVACUATION TOOL**  
PATENT PENDING

Roseville, MN  
Ph: 1-800-444-2373  
Fax: 651-645-7390

[www.fastestinc.com](http://www.fastestinc.com)  
WP180 Rev A 12/15/21