

OPERATING INSTRUCTIONS



Connector Maintenance:

- A daily, weekly and periodic inspection of the connector by competent person is recommended. User must establish a regular interval for maintenance as determined by the user media and operational environment.
- Inspection should include visual checks of the ball sealing area, sleeve, missing or loose components, leak tightness, ease of operation, sufficient lubrication, wear, dirt accumulation and damage.
- Establish a regular interval for lubrication. The media and environment will be determining factors in establishing this interval to prevent dryness and/or corrosion.
- Difficulty of operation after continual use indicates a need for lubrication or other maintenance.
- Use only original **FasTest** spare parts that are designed for the application and are subject to strict quality control. See Warranty.

Safety Warnings – Guidelines:

- If instructions are not completely understood by operator or components are missing, contact **FasTest** before attempting use of the connector.
- **FasTest CMFT70 Connector is NOT internally valved.** Do not attempt to disconnect unless safe conditions are met.
- **FasTest CMFT70** Connectors must only be used with test pieces of a specific size as indicated by the part number. Improper use could cause separation of the connector from the test piece resulting in physical harm or damage.

FasTest, Inc. Product Warranty

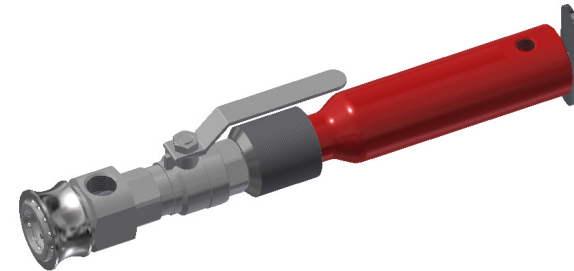
FasTest, Inc. warrants its products against defects of workmanship and/or material for 12 months from the date of the sale by FasTest, Inc. This warranty is void if the product is misused, tampered with or used in a manner that is not in accordance with FasTest, Inc. recommendations and/or instructions. FasTest, Inc. is not liable for consequential or other damages including, but not limited to, loss, damage, personal injury, or any other expense directly or indirectly arising from the use of or inability to use its products either separately or in combination with other products. ALL OTHER WARRANTIES EXPRESSED OR IMPLIED, WHETHER ORAL OR WRITTEN, INCLUDING BUT NOT LIMITED TO WARRANTIES OR MERCHANTABILITY OR FITNESS FOR A PARTICULAR PURPOSE ARE EXPRESSLY EXCLUDED.

Remedy under this warranty is limited to replacement of the product or an account credit in the amount of the original selling price, at the option on FasTest, Inc. All allegedly defective products must be

returned prepaid transportation to FasTest, Inc. along with information describing the products performance, unless disposition in the field is authorized in writing by FasTest, Inc.

CMFT90 Service Tool

Description: The Service Tool is a sleeve actuated connector that allows replacement of PortMax core while system is under pressure.



CMFT90 Service Tool

Please thoroughly read the instructions prior to operating the CMFT90 Service Tool. The CMFT90 is designed to provide a safe, reliable leak-tight seal and connection when properly maintained and operated. If you do not understand instructions, or if components are missing, call **FasTest** before using connector.

- The connector is designed to mate with a specific application. Verify the application prior to the introduction of pressure or processing.
- Connectors are NOT designed for permanent connections and are for temporary connections only.

CMFT90
SERVICE TOOL
PATENTED

PORTMAX™

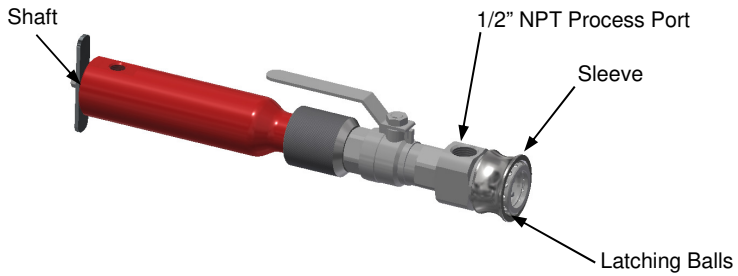
Roseville, MN
Ph: 1-800-444-2373
Fax: 651-645-7390

www.fastestinc.com
WP196 Rev A 12/15/21

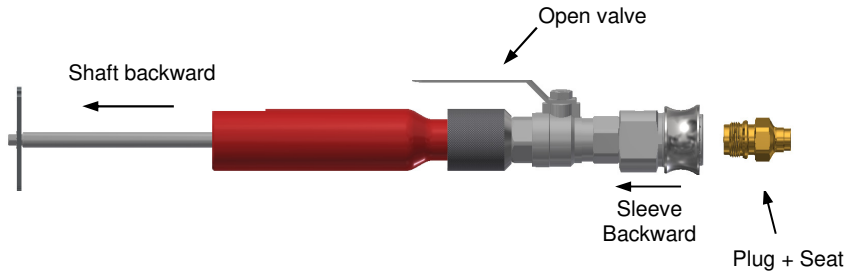
OPERATING INSTRUCTIONS



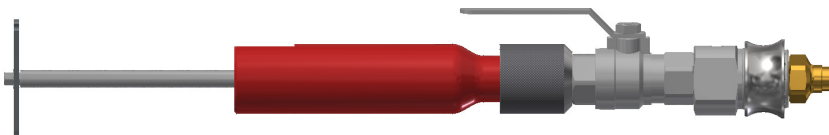
Operation of the CMFT90 Evacuation Tool:



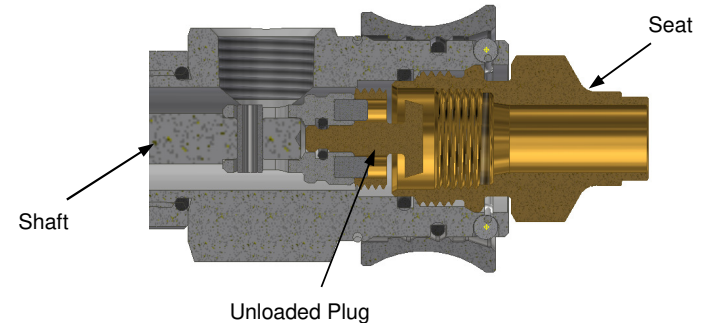
1. Pull the shaft backwards. Pull the sleeve back words.



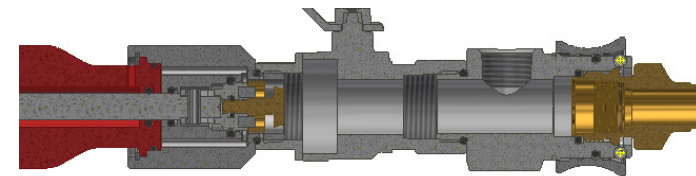
2. Attach the CMFT90 tool to the seat/plug assembly, then push sleeve forward.



3. Push shaft all the way forward. Rotate the shaft until the drive pins engage the holes in plug. Rotate the shaft counterclockwise until the plug threads begin to slip. The slipping motion is a result of the plug being full open or backed out.



4. Pull the Shaft all the way back and close the valve.



CMFT90
SERVICE TOOL
PATENTED

Roseville, MN
Ph: 1-800-444-2373
Fax: 651-645-7390

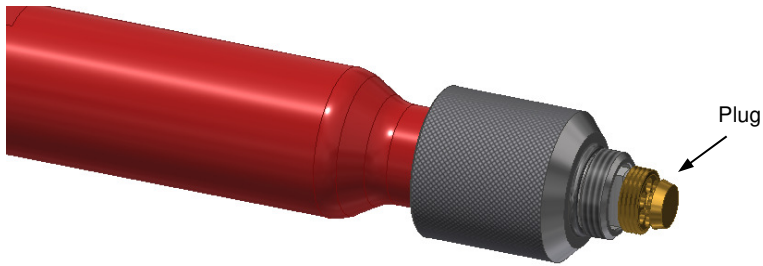
www.fastestinc.com
WP196 Rev A 12/15/21

OPERATING INSTRUCTIONS



5. Detach center body from the valve. Replace old plug with new plug.

Note: The valve must remain close.



6. Attach center body back to the valve tightly.



7. Push the shaft all the way in, the plug can now be resealed by turning the handle clockwise. Once the plug is fully threaded in by hand, it may now be torqued into the seat using a 5/16" socket, and *FasTest*, manual Torque wrench, SCMFTM02 (NOT PICTURED) or other applicable tool.

8. Turning the 5/16" Hex Drive on the shaft will thread the core into seat. Torque the core and seat to 12-14 ft/lbs.

9. Once the plug and seat are properly threaded together, pull the sleeve back and remove the evacuation Tool.



CMFT90
SERVICE TOOL
PATENTED

Roseville, MN
Ph: 1-800-444-2373
Fax: 651-645-7390

www.fastestinc.com
WP196 Rev A 12/15/21