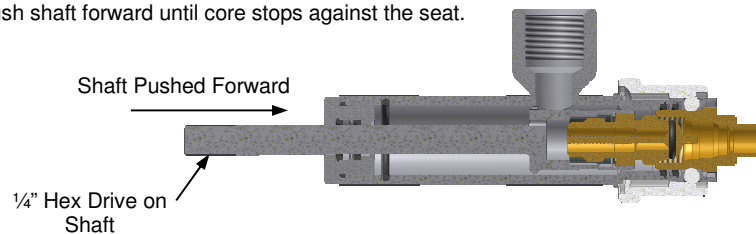


# OPERATING INSTRUCTIONS

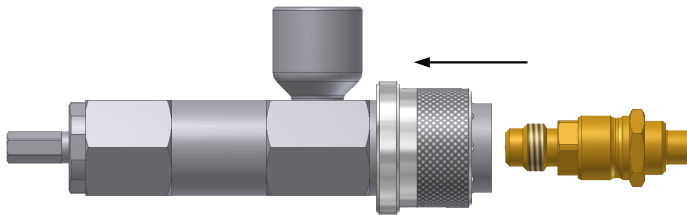
6. After processing is complete, the core may be torqued to the seat using a 1/4" socket, FasTest Pneumatic Torque Gun Model#SCFTP01 (NOT PICTURED) or other applicable tool.

7. Push shaft forward until core stops against the seat.



8. Turning the 1/4" Hex Drive on the shaft will thread the core into seat. Torque the core and seat to 8 ft/lbs.

9. Once the core and seat are properly threaded together, pull the sleeve back and remove the Core Insertion Tool.



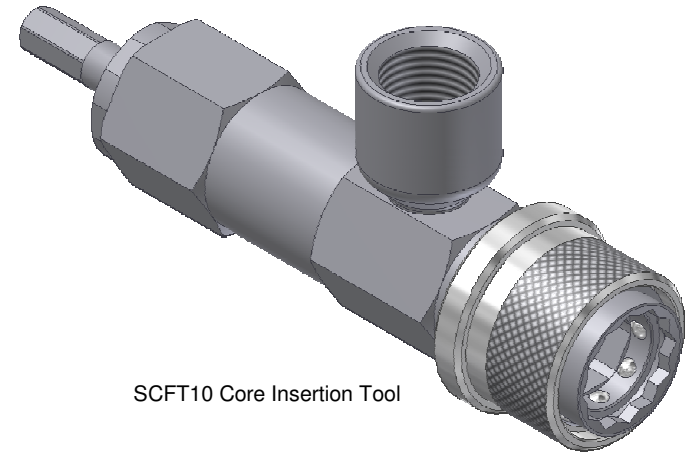
## **FasTest, Inc. Product Warranty**

FasTest, Inc. warrants its products against defects of workmanship and/or material for 12 months from the date of the sale by FasTest, Inc. This warranty is void if the product is misused, tampered with or used in a manner that is not in accordance with FasTest, Inc. recommendations and/or instructions. FasTest, Inc. is not liable for consequential or other damages including, but not limited to, loss, damage, personal injury, or any other expense directly or indirectly arising from the use of or inability to use its products either separately or in combination with other products. ALL OTHER WARRANTIES EXPRESSED OR IMPLIED, WHETHER ORAL OR WRITTEN, INCLUDING BUT NOT LIMITED TO WARRANTIES OR MERCHANTABILITY OR FITNESS FOR A PARTICULAR PURPOSE ARE EXPRESSLY EXCLUDED.

Remedy under this warranty is limited to replacement of the product or an account credit in the amount of the original selling price, at the option of FasTest, Inc. All allegedly defective products must be returned prepaid transportation to FasTest, Inc. along with information describing the products performance, unless disposition in the field is authorized in writing by FasTest, Inc.

## **SCFT10 Core Insertion Tool**

**Description:** The Core Insertion Tool is a sleeve actuated connector that allows processing directly through the seat before the *CoreMax* valve is installed.



SCFT10 Core Insertion Tool

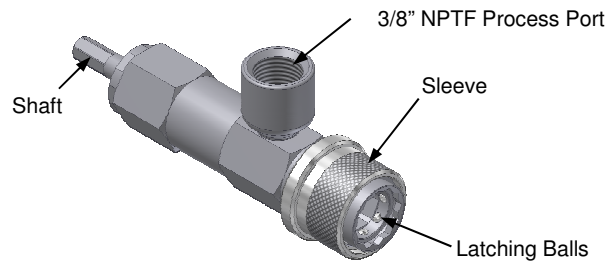
Please thoroughly read the instructions prior to operating the SCFT10 Core Insertion Tool. The SCFT10 is designed to provide a safe, reliable leak-tight seal and connection when properly maintained and operated. If you do not understand instructions, or if components are missing, call FasTest before using connector.

- The connector is designed to mate with a specific application. Verify the application prior to the introduction of pressure or processing.
- Connectors are NOT designed for permanent connections and are for temporary connections only.

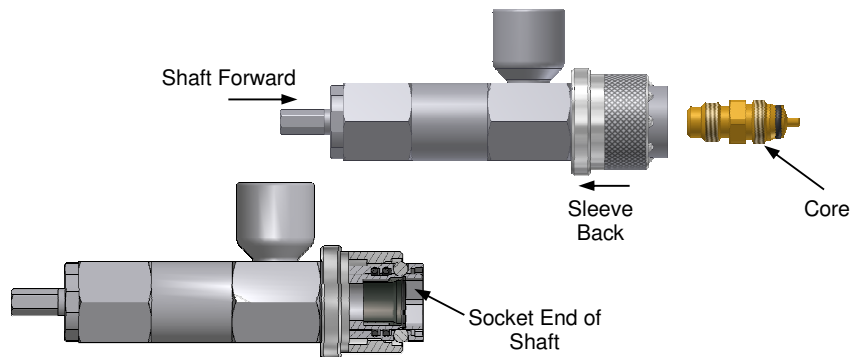
**Warning: This connector is NOT internally-valved. All pressure must be dissipated before disconnection.**

# OPERATING INSTRUCTIONS

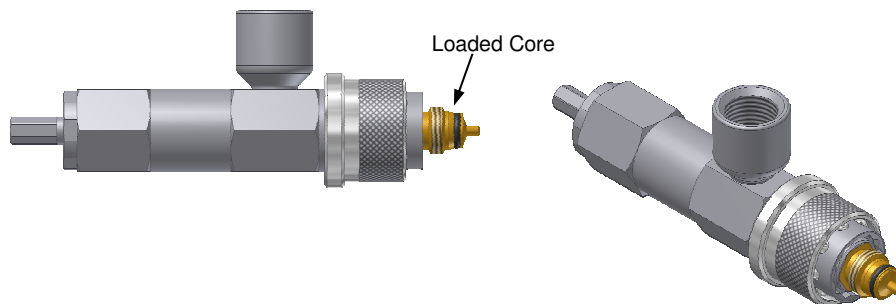
## Operation of the SCFT10 Core Insertion Tool:



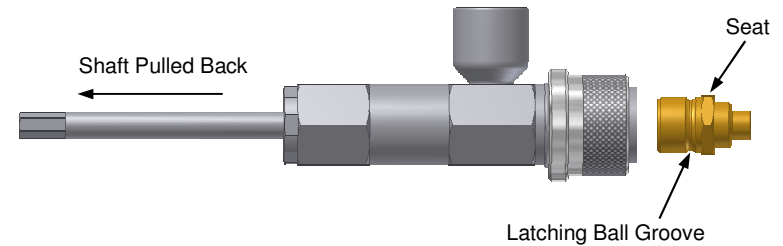
1. Pull the sleeve back and hold, then push the shaft all the way in until the socket end is almost flush with the end of the Core Insertion Tool.



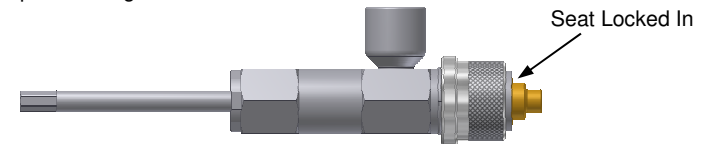
2. Insert the core into the socket end of shaft, then release sleeve.  
*Note: The end opposite the o-ring has to be inserted first.*



3. Once the core is fully locked and loaded into the shaft, pull the shaft back until it snaps into the back of the Core Insertion Tool.



4. With the sleeve pulled back, slide the Core Insertion Tool over the seat until the connector stops against the hex. Release the sleeve. It will snap forward pushing the latching balls into the corresponding groove on the CoreMax seat. Make sure the balls are locked into the groove before pressurizing.



5. With the tool latched to the seat, you may now process through the port of the Core Insertion Tool.

