

# OPERATING INSTRUCTIONS



## Connector Maintenance:

- A daily, weekly and periodic inspection of the connector by competent person is recommended. User must establish a regular interval for maintenance as determined by the user media and operational environment.
- Inspection should include visual checks of the ball sealing area, sleeve, missing or loose components, leak tightness, ease of operation, sufficient lubrication, wear, dirt accumulation and damage.
- Establish a regular interval for lubrication. The media and environment will be determining factors in establishing this interval to prevent dryness and/or corrosion.
- Difficulty of operation after continual use indicates a need for lubrication or other maintenance.
- Use only original **FasTest** spare parts that are designed for the application and are subject to strict quality control. See Warranty.

## Safety Warnings – Guidelines:

- If instructions are not completely understood by operator or components are missing, contact **FasTest** before attempting use of the connector.
- **FasTest CMPT10 MBE Connector is internally valved** and will prevent loss of media when disconnected. Do not attempt to disconnect unless safe conditions are met.
- **FasTest CMPT10 MBE** Connectors must only be used with test pieces of a specific size as indicated by the part number. Improper use could cause separation of the connector from the test piece resulting in physical harm or damage.

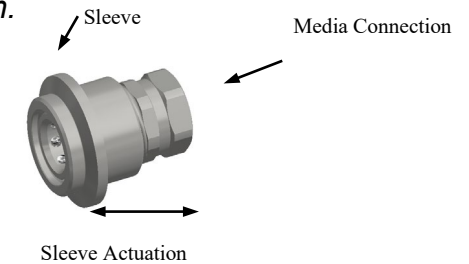
## FasTest, Inc. Product Warranty

FasTest, Inc. warrants its products against defects of workmanship and/or material for 12 months from the date of the sale by FasTest, Inc. This warranty is void if the product is misused, tampered with or used in a manner that is not in accordance with FasTest, Inc. recommendations and/or instructions. FasTest, Inc. is not liable for consequential or other damages including, but not limited to, loss, damage, personal injury, or any other expense directly or indirectly arising from the use of or inability to use its products either separately or in combination with other products. ALL OTHER WARRANTIES EXPRESSED OR IMPLIED, WHETHER ORAL OR WRITTEN, INCLUDING BUT NOT LIMITED TO WARRANTIES OR MERCHANTABILITY OR FITNESS FOR A PARTICULAR PURPOSE ARE EXPRESSLY EXCLUDED.

Remedy under this warranty is limited to replacement of the product or an account credit in the amount of the original selling price, at the option on FasTest, Inc. All allegedly defective products must be returned prepaid transportation to FasTest, Inc. along with information describing the products performance, unless disposition in the field is authorized in writing by FasTest, Inc.

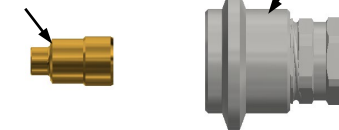
## CMPT10 MBE Sleeve Activated Connector

**Description:** CMPT10 MBE “Refrigeration Quick Disconnect” for CMHU08XXX Seat Connection.



Sleeve Forward Position:  
Male Fitting Connected & Secured.

CMHU08XXX SEAT



**CMPT10 MBE** Connector provides a reliable leak-tight connection that grips and seals a Male Fitting. Simply insert male end of fitting and slide sleeve forward, gripping balls will secure fitting.

Please thoroughly read and understand these operating instructions prior to operating the connector. The use of pressurized media for filling and sealing requires a thorough understanding of the **FasTest CMPT10 MBE** Operating Instructions.

- Operation
- Connector Maintenance
- Safety Warnings - Guidelines



**CMPT10 MBE**  
SERIES  
PATENT PENDING

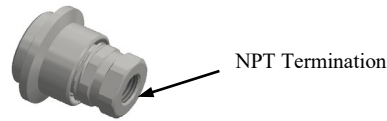
Roseville, MN  
Ph: 1-800-444-2373  
Fax: 651-645-7390  
[www.fastestinc.com](http://www.fastestinc.com)  
WP174 Rev A 12/14/2021

# OPERATING INSTRUCTIONS



## Installation:

Connect hose securely to the NPT Termination of the CMPT10 **MBE** Connector.



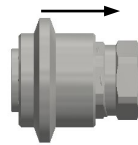
NPT Termination

## Operation:

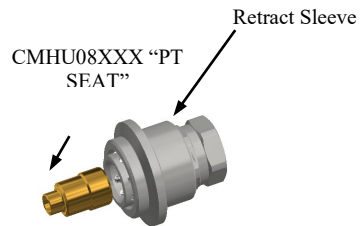
### Connecting Action:

1. Retract sleeve and position lever as shown.

Sleeve Retracted Manually



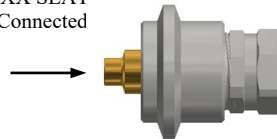
2. Insert test piece and slide sleeve forward collapsing balls around the male fitting.



Retract Sleeve

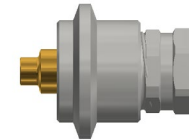
CMHU08XXX "PT SEAT"

CMHU08XXX SEAT Inserted & Connected



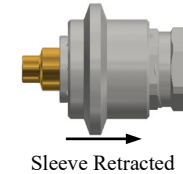
3. CMPT10 **MBE** is now sealed on the CMHU08XXX, open for flow.

Note: The Sleeve Will "Lock" Under Pressure to Prevent Accidental Disconnect.



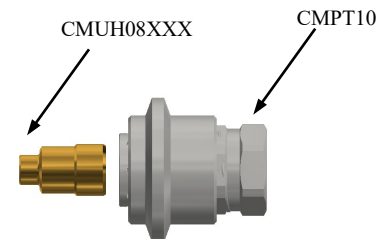
### Disconnecting Action:

1. Slide sleeve away from seat fitting.



Sleeve Retracted

2. Remove the CMUH08XXX.



CMUH08XXX

CMPT10



**CMPT10 MBE**  
SERIES  
PATENT PENDING

Roseville, MN  
Ph: 1-800-444-2373  
Fax: 651-645-7390  
[www.fastestinc.com](http://www.fastestinc.com)  
WP174 Rev A 12/14/2021