

Connector Maintenance:

- Establish a regular interval for maintenance as determined by user media and operational environment.
- Inspection should include visual checks of the sealing area, sleeve or body wear, missing or loose components, leak tightness, ease of operation, sufficient lubrication, wear, dirt accumulation and damage.
- Establish a regular interval for lubrication. The media and environment will be determining factors in establishing this interval to prevent dryness and/or corrosion.
- Difficulty of operation after continual use indicates a need for lubrication or other maintenance.
- Use only original **FasTest** spare parts that are designed for the application and are subject to strict quality control. See warranty.

Safety Warnings – Guidelines:

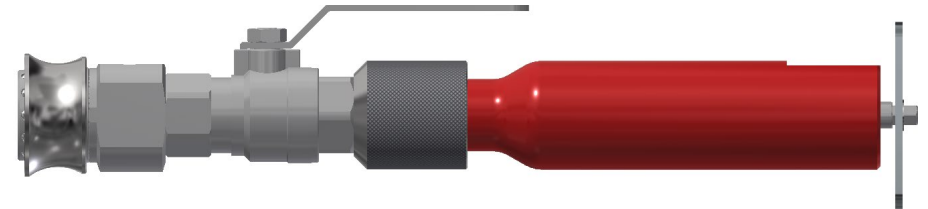
- If instructions are not completely understood by operator or components are missing, contact **FasTest** before attempting use of the connector.
- Application Safety: All **FasTest** products have been designed with safety in mind; however, it is the responsibility of the user to design each process in such a way to avoid mishaps that can cause physical hazard or property loss. Secondary restraints such as safety chains, shields, cages or fixtures are all good choices depending on the application. **FasTest** can recommend or assist you in clarifying potential hazards of your application.

FasTest, Inc. Product Warranty

FasTest, Inc. warrants its products against defects of workmanship and/or material for 12 months from the date of the sale by FasTest, Inc. This warranty is void if the product is misused, tampered with or used in a manner that is not in accordance with FasTest, Inc. recommendations and/or instructions. FasTest, Inc. is not liable for consequential or other damages including, but not limited to, loss, damage, personal injury, or any other expense directly or indirectly arising from the use of or inability to use its products either separately or in combination with other products. ALL OTHER WARRANTIES EXPRESSED OR IMPLIED, WHETHER ORAL OR WRITTEN, INCLUDING BUT NOT LIMITED TO WARRANTIES OR MERCHANTABILITY OR FITNESS FOR A PARTICULAR PURPOSE ARE EXPRESSLY EXCLUDED.

Remedy under this warranty is limited to replacement of the product or an account credit in the amount of the original selling price, at the option on FasTest, Inc. All allegedly defective products must be returned prepaid transportation to FasTest, Inc. along with information describing the products performance, unless disposition in the field is authorized in writing by FasTest, Inc.

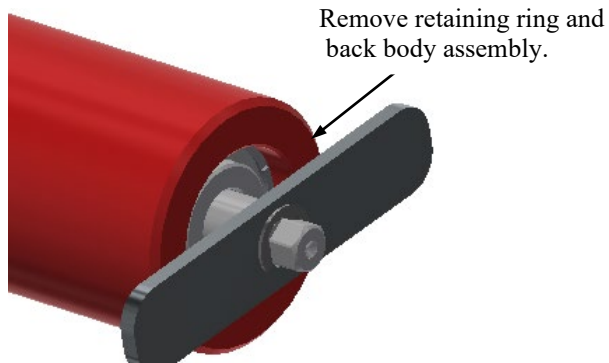
Repair Kit CMFTR90 Re-Build Instructions



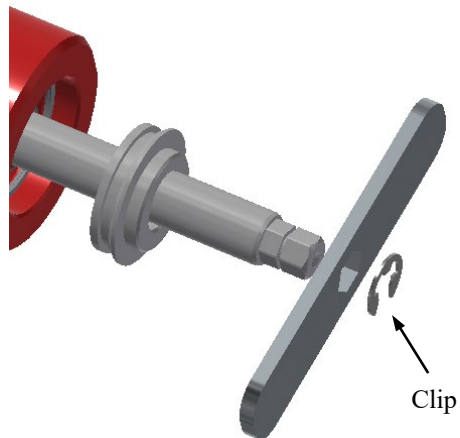
Repair Kit / Re-Build Instructions:

Dis-assembly

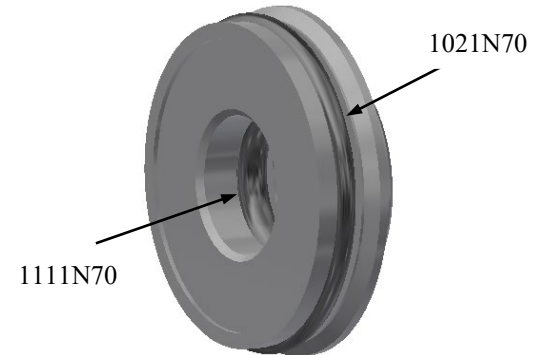
1. Remove the retaining ring in back body, pressurize the connector not more than 30 psi to remove the back body.



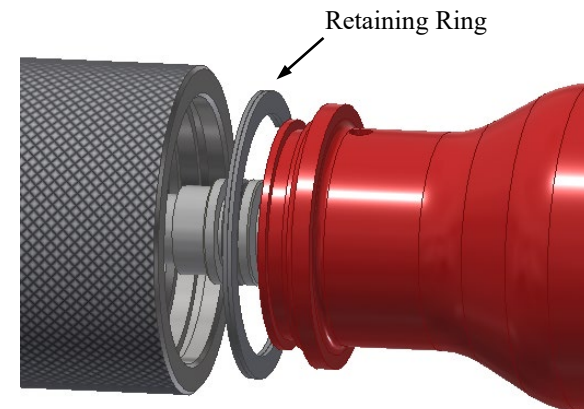
2. Remove the shaft clip. Then remove the shaft from the Back body.



3. Remove and replace the seals from inside and outside of the back body using a small screwdriver or pick. The seals are to be lubricated with refrigerant oil.

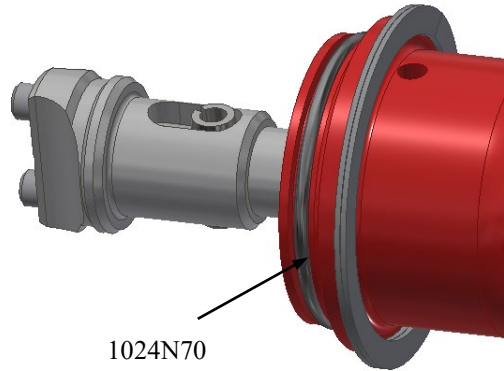


4. Remove the retaining ring in center body and disconnect back body from center body.

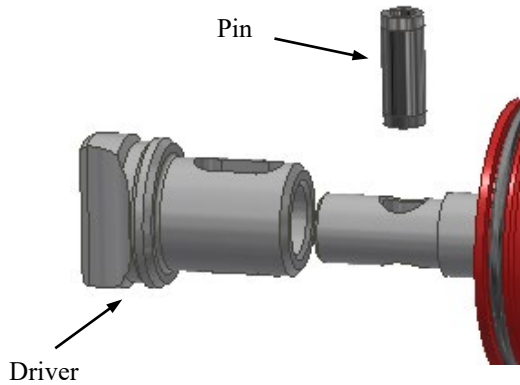


Re-Build Instructions

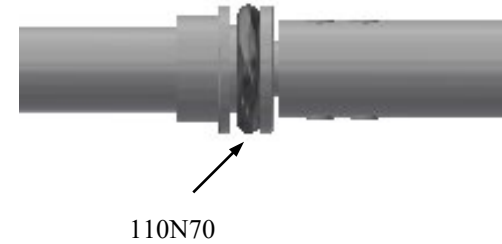
5. Remove and replace the O-ring from outside of the back body



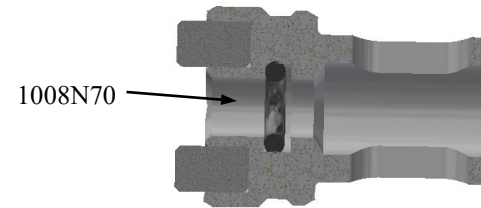
6. Take out pin using arbor press and remove driver from the shaft.



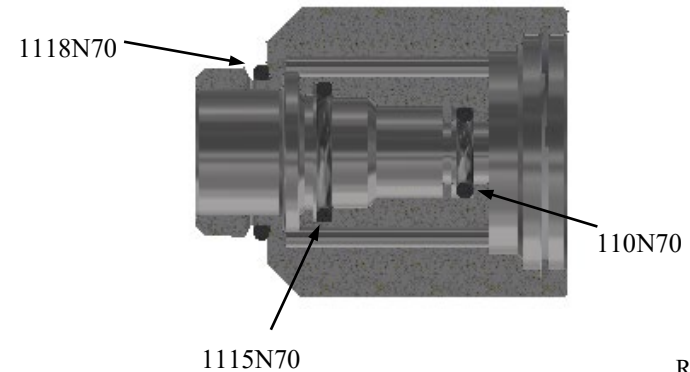
7. Remove and replace the O-ring from piston shaft and lubricate with refrigerant oil.



8. Remove and replace the O-ring inside the drive shaft and lubricate with refrigerant oil.



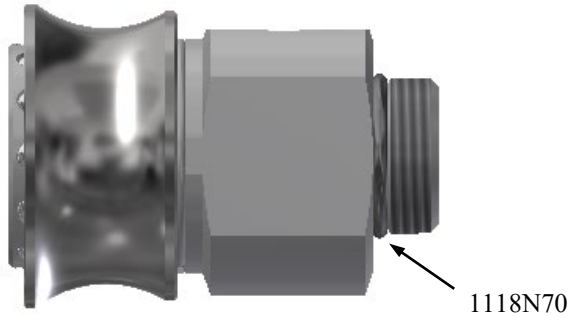
9. Remove and replace and lubricate all three O-rings from center body as shown in figure.



Re-Build Instructions

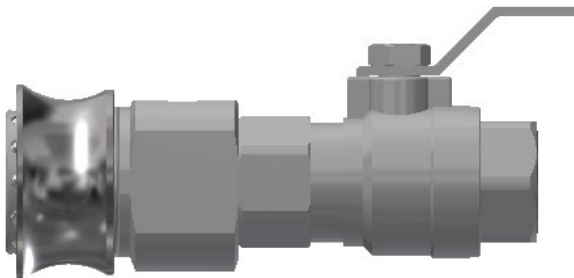


10. Remove and replace O-ring between front body and valve.

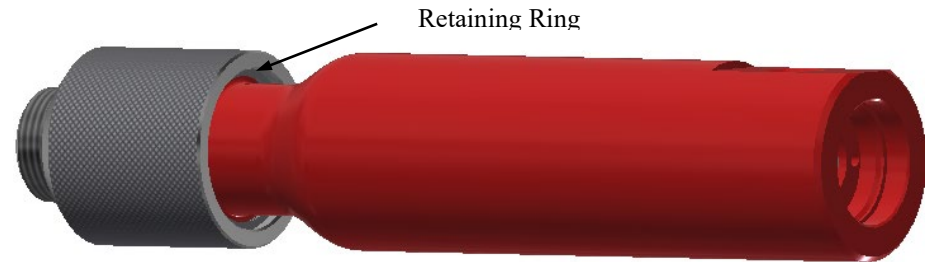


Assembly:

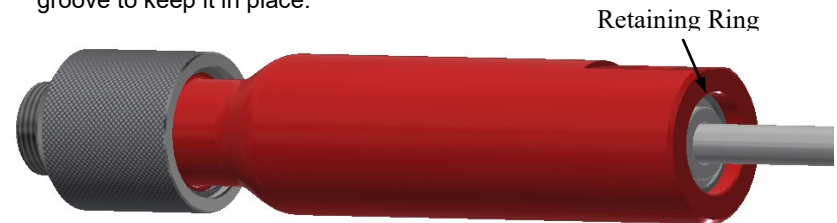
11. Assemble front body and valve tightly together.



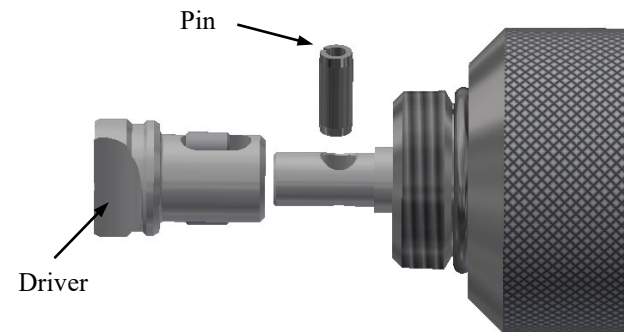
12. Assemble back body and center body using retaining ring.



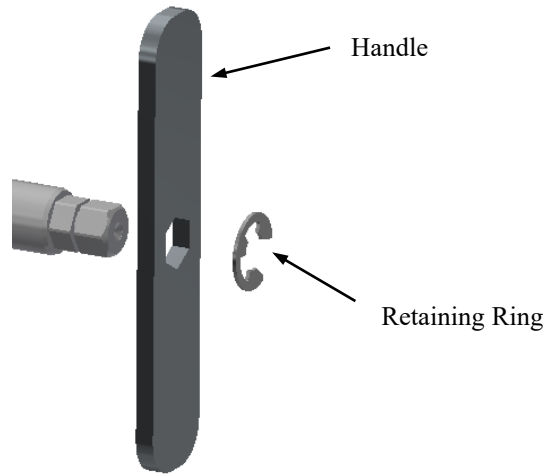
13. Insert shaft and back cap into back body and insert retaining ring in the groove to keep it in place.



14. Insert driver into the shaft and place pin using arbor press to keep it in place.



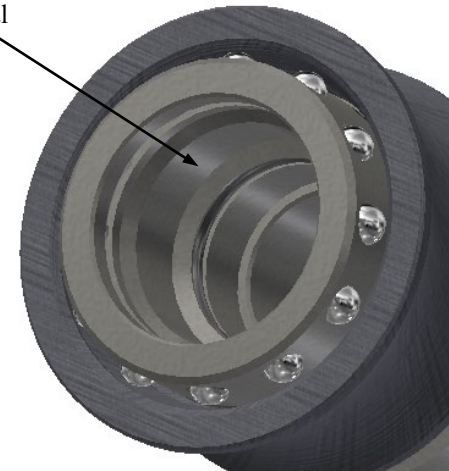
15. Insert handle and external retaining ring.



Main Seal Replacement Instructions:

1. Remove and replace the main seal with a pick or small screwdriver.

Remove and re-
place Main seal



16. Insert center and back body into front end tightly.

