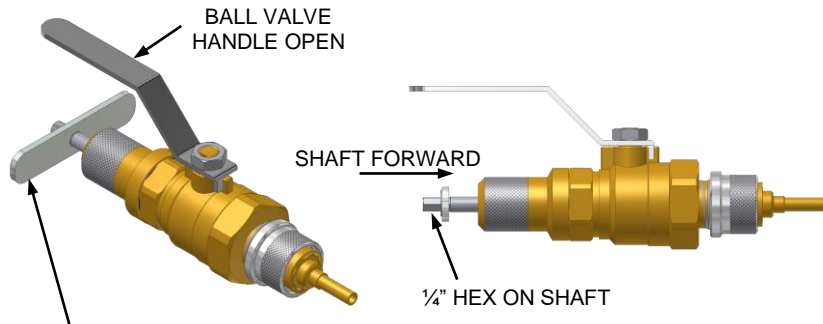


OPERATING INSTRUCTIONS

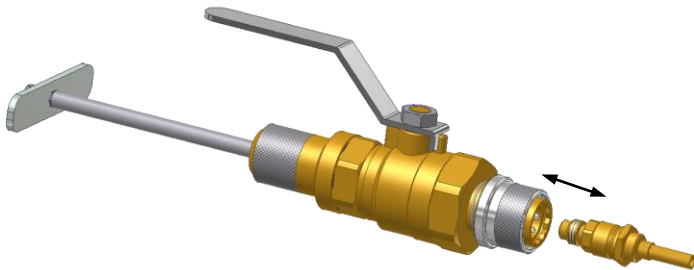


7. Open ball valve and slide the shaft forward until it meets the Seat. Torque the Core into the Seat.



NOTE: DO NOT USE THIS HANDLE TO TORQUE THE CORES. USE A TORQUE GUN OR TORQUE WRENCH OVER THE 1/4" HEX IN THE SHAFT.

8. Slide the sleeve back and remove the Core Removal Tool.



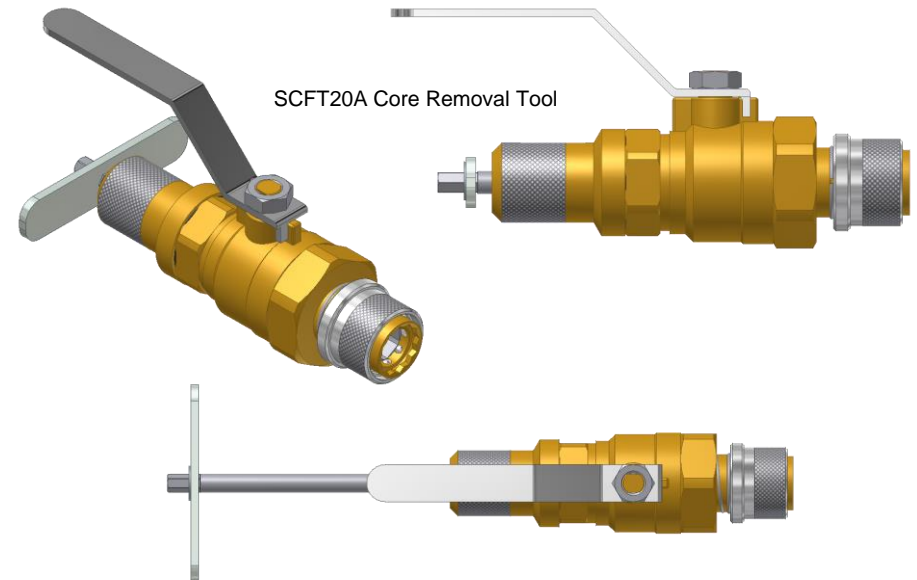
FasTest, Inc. Product Warranty

FasTest, Inc. warrants its products against defects of workmanship and/or material for 12 months from the date of the sale by FasTest, Inc. This warranty is void if the product is misused, tampered with or used in a manner that is not in accordance with FasTest, Inc. recommendations and/or instructions. FasTest, Inc. is not liable for consequential or other damages including, but not limited to, loss, damage, personal injury, or any other expense directly or indirectly arising from the use of or inability to use its products either separately or in combination with other products. ALL OTHER WARRANTIES EXPRESSED OR IMPLIED, WHETHER ORAL OR WRITTEN, INCLUDING BUT NOT LIMITED TO WARRANTIES OR MERCHANTABILITY OR FITNESS FOR A PARTICULAR PURPOSE ARE EXPRESSLY EXCLUDED.

Remedy under this warranty is limited to replacement of the product or an account credit in the amount of the original selling price, at the option of FasTest, Inc. All allegedly defective products must be returned prepaid transportation to FasTest, Inc. along with information describing the products performance, unless disposition in the field is authorized in writing by FasTest, Inc.

SCFT20/SCFT20A Core Removal Tool

Description: The *CoreMax* Removal Tool allows you to remove and replace the core after the unit is in service with minimal loss of media.



Please thoroughly read the instructions prior to operating the SCFT20A Core Removal Tool. If you do not understand instructions, or if components are missing, call *FasTest* before using connector.

- The Removal Tool is designed to mate with a specific application.
- Connectors are NOT designed for permanent connections and are for temporary connections only.

Warning: This connector is NOT internally-valved. All pressure must be dissipated before disconnection.

COREMAX®

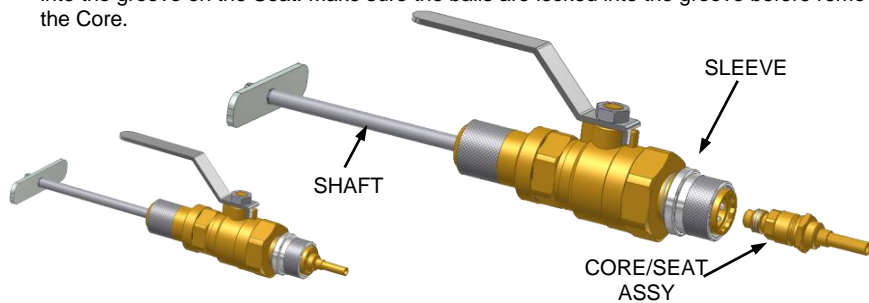
Roseville, MN
Ph: 1-800-444-2373
Fax: 651-645-7390
www.fastestinc.com
WP054 Rev C 10/6/2010

OPERATING INSTRUCTIONS

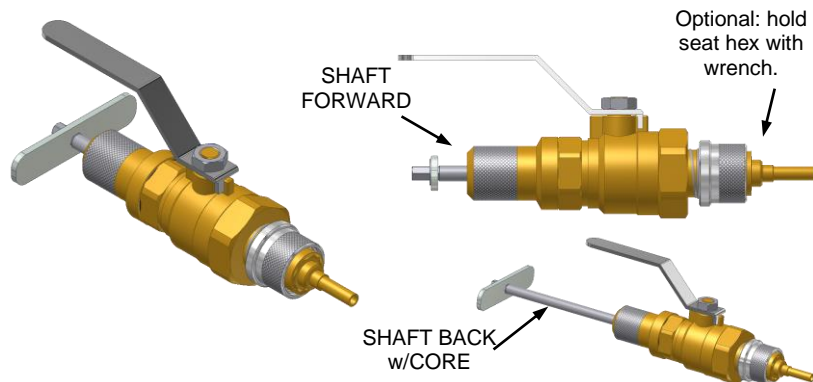


OPERATION:

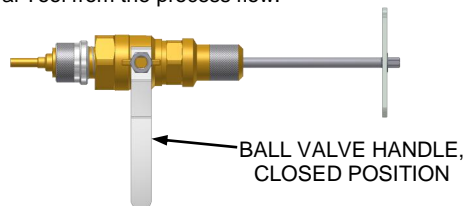
1. Pull the sleeve back and hold, slide the Core Removal Tool over the Core/Seat until the connector stops against the Seat hex. Let the sleeve go forward pushing the latching balls into the groove on the Seat. Make sure the balls are locked into the groove before removing the Core.



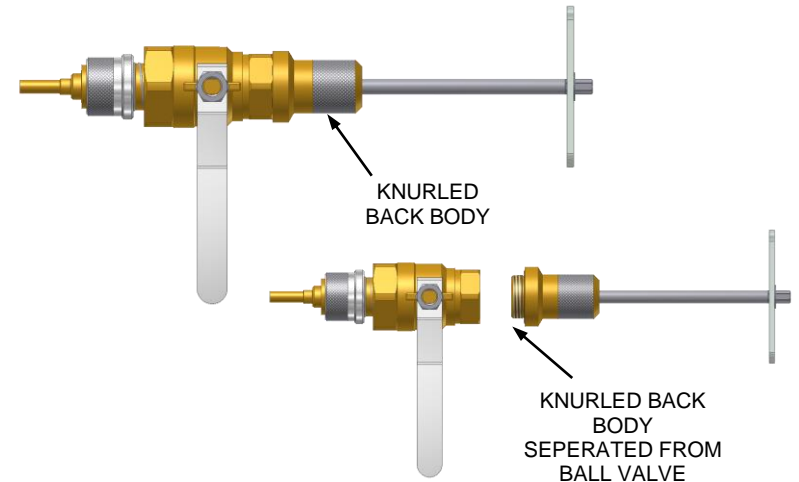
2. Push shaft forward until it is engaged with the Core. Twist shaft and remove the Core from the Seat. When the Core becomes completely disengaged from the Seat, slide the shaft/core completely back. **Note:** If the tool is designed without a socket in the front body the use of a wrench will be required while removing and inserting the CoreMax core, in and out of the seat.



3. Rotate the ball valve handle 90 degrees. This will close/isolate the back half of the Core Removal Tool from the process flow.

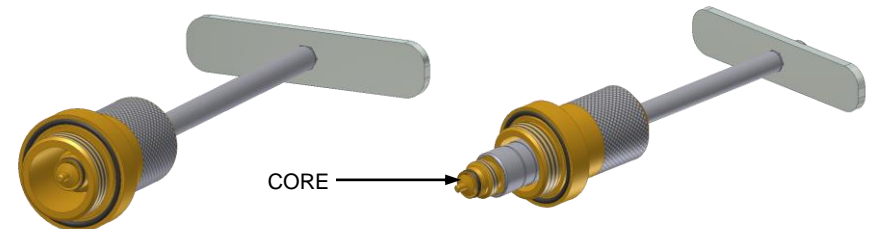


4. You may now unthread BY HAND (release counter-clockwise) the knurled back body from the Core Removal Tool and remove the shaft/body assembly.

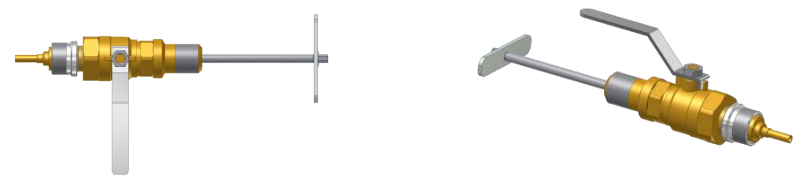


NOTE: While Core is removed, processing can be performed through the Seat and Core Removal Tool. Do not remove from the Seat until the Core is torqued back into the Seat.

5. Push shaft forward to expose Core, replacement/service may now be performed on Core.



6. Once service is complete, replace the shaft/core/knurled back body assembly into the Core Removal Tool, hand tighten the knurled back body into ball valve.



COREMAX®

Roseville, MN
Ph: 1-800-444-2373
Fax: 651-645-7390
www.fastestinc.com
WP054 Rev C 10/6/2010

OPERATING INSTRUCTIONS



COREMAX[®]

Roseville, MN
Ph: 1-800-444-2373
Fax: 651-645-7390
www.fastestinc.com
WP054 Rev C 10/6/2010